

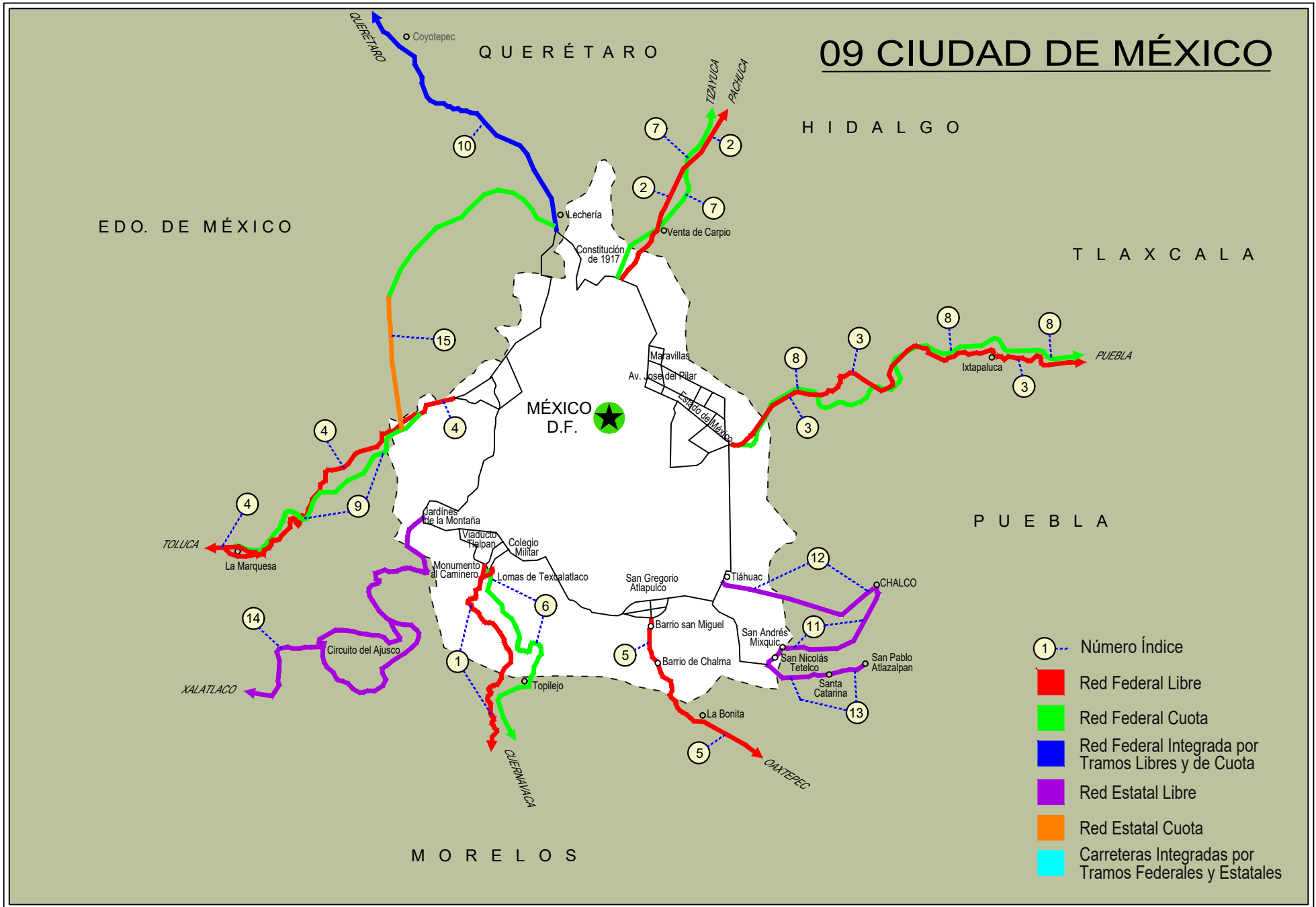
CIUDAD DE MÉXICO

INDICE CARRETERA

RUTA

INDICE CARRETERA	RUTA
---RED FEDERAL LIBRE---	
1 México - Cuernavaca (Libre)	MEX-095
2 México - Pachuca (Libre)	MEX-085
3 México - Puebla (Libre)	MEX-150
4 México - Toluca	MEX-015
5 San Gregorio - Oaxtepec	MEX-113
---RED FEDERAL DE CUOTA---	
6 México - Cuernavaca (Cuota)	MEX-095D
7 México - Pachuca (Cuota)	MEX-085D
8 México - Puebla (Cuota)	MEX-150D
9 México - Toluca (Cuota)	MEX-015D
---RED FEDERAL INTEGRADA POR TRAMOS LIBRES Y DE CUOTA---	
10 México - Querétaro (Cuota)	MEX-057-MEX-057D
---RED ESTATAL LIBRE---	
11 Chalco - Mixquic	EM-CDMX
12 Chalco - Tláhuac	EM-CDMX
13 T. C. (México - Mixquic) - San Pablo Atlazalpan	EM-106-CDMX
14 Xalatlaco - El Ajusco	EM-CDMX
---RED ESTATAL DE CUOTA---	
15 La Venta - Chamapa (Cuota)	EM-D

09 CIUDAD DE MÉXICO



- ① Índice
- Red Federal Libre
- Red Federal Cuota
- Red Federal Integrada por Tramos Libres y de Cuota
- Red Estatal Libre
- Red Estatal Cuota
- Carreteras Integradas por Tramos Federales y Estatales

CIUDAD DE MÉXICO

1 CARR: México - Cuernavaca (Libre)

CLAVE: 00040

RUTA: MEX-095

AÑO: 2025

LUGAR	ESTACION				CLASIFICACION VEHICULAR EN PORCIENTO										COORDENADAS					
	KM	TE	SC	TDPA	M	A	B	C2	C3	T3S2	T3S3	T3S2R4	OTROS	A	B	C	K'	D	LATITUD	LONGITUD
México	0.00																			
T. Der. San Miguel Xicalco	25.50	1	0	27508	6.0	82.4	0.8	7.5	1.9	1.0	0.4	0.0	0.0	88.4	0.8	10.8	0.059	0.529	19.235982	-99.158246
T. Der. San Miguel Xicalco	25.50	3	0	25301	6.6	85.9	0.9	2.9	2.1	1.1	0.5	0.0	0.0	92.5	0.9	6.6	0.064	0.549	19.233338	-99.156286
T. Izq. San Miguel Topilejo	28.78	1	1	12543	6.8	79.3	1.1	9.5	2.0	1.3	0.0	0.0	0.0	86.1	1.1	12.8	0.074	0.634	19.213849	-99.151677
T. Izq. San Miguel Topilejo	28.78	1	2	13534	6.8	79.5	1.1	9.3	2.0	1.3	0.0	0.0	0.0	86.3	1.1	12.6	0.094	0.634	19.213828	-99.151658
T. Izq. San Miguel Topilejo	28.78	3	0	8604	6.8	81.1	1.2	7.4	1.7	1.3	0.5	0.0	0.0	87.9	1.2	10.9	0.088	0.711	19.192710	-99.165775
Parres El Guarda	39.50	1	0	7764	5.8	84.5	0.9	6.7	1.4	0.7	0.0	0.0	0.0	90.3	0.9	8.8	0.087	0.700	19.139606	-99.170137
Parres El Guarda	39.50	3	0	7322	5.5	85.1	0.9	6.5	1.3	0.7	0.0	0.0	0.0	90.6	0.9	8.5	0.085	0.701	19.129416	-99.180412
Lim. Edos. Term. CDMX Ppia. Mor.	45.44																			
T. Der. Zempoala	51.40	1	0	9262	5.2	87.9	2.5	2.8	1.1	0.5	0.0	0.0	0.0	93.1	2.5	4.4	0.112	0.784	19.057230	-99.242294
T. Der. Zempoala	51.40	3	0	6244	5.9	88.5	0.8	3.0	1.3	0.5	0.0	0.0	0.0	94.4	0.8	4.8	0.085	0.566	19.044620	-99.235633
T. Izq. Coajomulco	57.12	3	0	5532	5.5	83.7	2.2	6.6	1.0	1.0	0.0	0.0	0.0	89.2	2.2	8.6	0.091	0.644	19.027120	-99.207129
T. Der. Huitzilac	64.20	1	0	9006	6.0	86.3	2.3	3.4	1.2	0.7	0.1	0.0	0.0	92.3	2.3	5.4	0.079	0.551	19.002782	-99.257415
T. Der. Huitzilac	64.20	3	0	15720	6.0	83.1	2.2	5.2	1.4	1.0	0.6	0.4	0.1	89.1	2.2	8.7	0.078	0.591	18.995701	-99.260689
T. Izq. Tepoztlán	71.36	1	0	26022	6.3	83.0	2.5	5.4	1.2	0.8	0.4	0.2	0.2	89.3	2.5	8.2	0.073	0.534	18.970873	-99.249703
T. Izq. Tepoztlán	71.36	3	1	14069	6.7	87.9	1.1	3.7	0.2	0.3	0.1	0.0	0.0	94.6	1.1	4.3	0.078	0.502	18.959689	-99.246076
T. Izq. Tepoztlán	71.36	3	2	13873	7.1	88.0	0.9	3.5	0.2	0.2	0.1	0.0	0.0	95.1	0.9	4.0	0.078	0.502	18.959670	-99.246037
Cuernavaca	75.42																			

2 CARR: México - Pachuca (Libre)

CLAVE: 00431

RUTA: MEX-085

AÑO: 2025

LUGAR	ESTACION				CLASIFICACION VEHICULAR EN PORCIENTO										COORDENADAS					
	KM	TE	SC	TDPA	M	A	B	C2	C3	T3S2	T3S3	T3S2R4	OTROS	A	B	C	K'	D	LATITUD	LONGITUD
México	0.00																			
Lim. Edos. Term. CDMX Ppia. Méx.	9.89																			
T. Der. Pirámides	26.93	1	1	15084	5.2	84.5	0.6	4.5	0.5	2.3	1.6	0.5	0.3	89.7	0.6	9.7	0.076	0.510	19.618919	-99.008068
T. Der. Pirámides	26.93	1	2	15689	4.9	85.1	0.5	4.7	0.4	2.2	1.5	0.4	0.3	90.0	0.5	9.5	0.061	0.510	19.619029	-99.008127
Venta de Carpio	27.00	3	1	27637	4.2	87.4	0.4	4.4	0.9	1.3	1.1	0.1	0.2	91.6	0.4	8.0	0.062	0.508	19.625721	-99.003003
Venta de Carpio	27.00	3	2	26768	4.1	87.4	0.6	4.6	0.8	1.2	1.0	0.1	0.2	91.5	0.6	7.9	0.057	0.508	19.625765	-99.003195
T. Der. Aut. México - Pachuca (Cuota)	37.52	1	1	28930	5.3	88.9	0.5	3.2	0.9	0.6	0.3	0.2	0.1	94.2	0.5	5.3	0.076	0.503	19.704466	-98.978286
T. Der. Aut. México - Pachuca (Cuota)	37.52	1	2	29292	5.2	89.6	0.4	3.0	0.7	0.5	0.3	0.2	0.1	94.8	0.4	4.8	0.076	0.503	19.703815	-98.978702
Acceso al AIFA por San Jerónimo	42.00	1	1	19369	6.3	86.5	1.4	4.8	0.4	0.4	0.1	0.1	0.0	92.8	1.4	5.8	0.074	0.510	19.739442	-98.972054
Acceso al AIFA por San Jerónimo	42.00	1	2	20173	6.4	86.3	1.3	4.7	0.5	0.5	0.1	0.2	0.0	92.7	1.3	6.0	0.086	0.510	19.739445	-98.972140
Acceso al AIFA por San Jerónimo	42.00	3	1	20539	6.7	86.5	0.6	4.3	0.7	0.9	0.1	0.2	0.0	93.2	0.6	6.2	0.101	0.508	19.748938	-98.972534
Acceso al AIFA por San Jerónimo	42.00	3	2	21229	6.8	86.4	0.7	4.2	0.9	0.8	0.1	0.1	0.0	93.2	0.7	6.1	0.092	0.508	19.750841	-98.972903

CIUDAD DE MÉXICO

2 CARR: México - Pachuca (Libre)

CLAVE: 00431

RUTA: MEX-085

AÑO: 2025

LUGAR	ESTACION				CLASIFICACION VEHICULAR EN PORCIENTO										COORDENADAS					
	KM	TE	SC	TDPA	M	A	B	C2	C3	T3S2	T3S3	T3S2R4	OTROS	A	B	C	K'	D	LATITUD	LONGITUD
T. C. Vía Perimentral AIFA	42.70	3	1	20451	6.7	86.8	0.5	4.2	0.9	0.7	0.1	0.1	0.0	93.5	0.5	6.0	0.075	0.514	19.756378	-98.973389
T. C. Vía Perimentral AIFA	42.70	3	2	21591	6.8	86.7	0.4	4.3	0.8	0.8	0.1	0.1	0.0	93.5	0.4	6.1	0.078	0.514	19.756429	-98.973484
T. Izq. Zumpango	44.68	1	1	18157	4.7	86.6	1.9	4.1	0.9	0.8	0.3	0.3	0.4	91.3	1.9	6.8	0.068	0.519	19.760489	-98.973576
T. Izq. Zumpango	44.68	1	2	19552	4.8	86.7	2.0	4.0	0.8	0.7	0.3	0.4	0.3	91.5	2.0	6.5	0.075	0.519	19.759582	-98.973704
T. Izq. Zumpango	44.68	3	1	13184	8.6	79.8	1.1	5.8	1.7	1.6	0.3	0.8	0.3	88.4	1.1	10.5	0.070	0.503	19.772735	-98.973077
T. Izq. Zumpango	44.68	3	2	13051	8.7	80.0	1.2	5.7	1.6	1.6	0.3	0.7	0.2	88.7	1.2	10.1	0.072	0.503	19.772742	-98.973137
Lim. Edos. Term. Méx. Ppia. Hgo.	49.30																			
Tizayuca	52.50	1	1	11609	10.0	79.5	1.2	5.9	1.6	1.1	0.3	0.3	0.1	89.5	1.2	9.3	0.079	0.537	19.817704	-98.975943
Tizayuca	52.50	1	2	13462	9.9	79.3	1.5	6.3	1.2	1.1	0.3	0.2	0.2	89.2	1.5	9.3	0.079	0.537	19.818073	-98.976125
Tizayuca	52.50	3	1	19439	3.6	88.0	1.2	4.7	0.9	0.7	0.4	0.3	0.2	91.6	1.2	7.2	0.082	0.509	19.858304	-98.968200
Tizayuca	52.50	3	2	20152	3.7	88.0	1.1	4.6	1.0	0.6	0.3	0.4	0.3	91.7	1.1	7.2	0.071	0.509	19.858044	-98.968585
T. C. México - Tizayuca (Cuota)	61.00	1	1	7610	8.3	80.0	2.6	6.2	1.3	0.8	0.4	0.3	0.1	88.3	2.6	9.1	0.076	0.501	19.878595	-98.947875
T. C. México - Tizayuca (Cuota)	61.00	1	2	7633	8.5	79.2	2.5	6.2	1.6	0.7	0.5	0.5	0.3	87.7	2.5	9.8	0.080	0.501	19.883990	-98.942441
T. C. México - Tizayuca (Cuota)	61.00	3	1	25496	0.8	86.6	2.6	5.7	1.7	1.6	0.5	0.3	0.2	87.4	2.6	10.0	0.085	0.513	19.898281	-98.928396
T. C. México - Tizayuca (Cuota)	61.00	3	2	28552	0.6	86.7	2.9	5.6	1.6	1.4	0.6	0.4	0.2	87.3	2.9	9.8	0.087	0.513	19.900970	-98.926127
X. C. Arco Norte de La Ciudad de México	64.20	1	1	32497	0.6	87.1	3.0	5.1	1.3	1.9	0.5	0.4	0.1	87.7	3.0	9.3	0.086	0.501	19.923095	-98.900657
X. C. Arco Norte de La Ciudad de México	64.20	1	2	32320	0.5	87.8	2.9	5.0	1.2	1.8	0.4	0.3	0.1	88.3	2.9	8.8	0.105	0.501	19.923286	-98.900832
X. C. Arco Norte de La Ciudad de México	64.20	3	1	37035	1.2	84.5	3.9	6.0	1.1	2.0	0.7	0.4	0.2	85.7	3.9	10.4	0.074	0.515	19.930857	-98.890884
X. C. Arco Norte de La Ciudad de México	64.20	3	2	34670	1.3	84.9	3.8	6.1	1.0	1.9	0.6	0.3	0.1	86.2	3.8	10.0	0.098	0.515	19.929262	-98.893523
Ent. Colonia	83.97	1	1	65850	0.9	89.9	2.7	3.9	0.4	0.8	0.4	0.8	0.2	90.8	2.7	6.5	0.098	0.512	20.043750	-98.792840
Ent. Colonia	83.97	1	2	62098	0.8	89.9	2.8	3.7	0.6	0.7	0.5	0.8	0.2	90.7	2.8	6.5	0.075	0.512	20.044143	-98.792993
X. C. Libramiento de Pachuca	86.50	1	1	54809	4.0	88.5	3.4	1.6	0.8	0.5	0.7	0.3	0.2	92.5	3.4	4.1	0.071	0.505	20.097799	-98.765979
X. C. Libramiento de Pachuca	86.50	1	2	53456	3.9	88.7	3.3	1.7	0.7	0.5	0.6	0.4	0.2	92.6	3.3	4.1	0.078	0.505	20.098034	-98.766129
Pachuca	94.00																			

3 CARR: México - Puebla (Libre)

CLAVE: 00449

RUTA: MEX-150

AÑO: 2025

LUGAR	ESTACION				CLASIFICACION VEHICULAR EN PORCIENTO										COORDENADAS					
	KM	TE	SC	TDPA	M	A	B	C2	C3	T3S2	T3S3	T3S2R4	OTROS	A	B	C	K'	D	LATITUD	LONGITUD
México	0.00																			
Lim. Edos. Term. CDMX Ppia. Méx.	18.66																			
T. Der. Chalco	28.85	1	1	34946	4.5	88.6	0.5	3.7	0.9	0.6	0.4	0.6	0.2	93.1	0.5	6.4	0.068	0.512	19.310942	-98.904528
T. Der. Chalco	28.85	1	2	33203	5.0	88.2	0.6	3.5	1.0	0.6	0.5	0.5	0.1	93.2	0.6	6.2	0.067	0.512	19.311190	-98.904073
T. Der. Chalco (Lateral)	28.85	3	1	8789	6.1	86.6	0.3	5.4	0.4	0.3	0.3	0.4	0.2	92.7	0.3	7.0	0.067	0.501	19.312587	-98.894262
T. Der. Chalco (Central)	28.85	3	1	27096	4.0	89.5	0.5	3.6	0.7	0.5	0.4	0.5	0.3	93.5	0.5	6.0	0.073	0.505	19.312663	-98.894279

CIUDAD DE MÉXICO

3 CARR: México - Puebla (Libre)

CLAVE: 00449

RUTA: MEX-150

AÑO: 2025

LUGAR	ESTACION				CLASIFICACION VEHICULAR EN PORCIENTO										COORDENADAS					
	KM	TE	SC	TDPA	M	A	B	C2	C3	T3S2	T3S3	T3S2R4	OTROS	A	B	C	K'	D	LATITUD	LONGITUD
T. Der. Chalco (Lateral)	28.85	3	2	8766	6.2	86.1	0.2	6.1	0.4	0.3	0.3	0.3	0.1	92.3	0.2	7.5	0.070	0.501	19.312831	-98.894324
T. Der. Chalco (Central)	28.85	3	2	26374	3.8	89.3	0.6	3.8	0.6	0.4	0.7	0.6	0.2	93.1	0.6	6.3	0.085	0.505	19.312722	-98.894300
Ixtapaluca	31.06	3	1	22658	6.1	87.7	0.2	4.7	0.4	0.3	0.2	0.1	0.3	93.8	0.2	6.0	0.068	0.514	19.315811	-98.874649
Ixtapaluca	31.06	3	2	23930	5.8	87.9	0.2	4.6	0.6	0.4	0.1	0.1	0.3	93.7	0.2	6.1	0.072	0.514	19.315900	-98.874822
T. Der. C. México - Puebla (Cuota) (Río Frío)	62.06	1	0	2967	4.2	68.9	2.8	10.7	6.0	5.5	1.4	0.5	0.0	73.1	2.8	24.1	0.078	0.535	19.349755	-98.670747
T. Der. C. México - Puebla (Cuota) (Río Frío)	62.06	3	0	1279	3.3	77.0	2.2	8.1	3.5	4.7	0.6	0.6	0.0	80.3	2.2	17.5	0.103	0.518	19.352828	-98.662805
Lim. Edos. Term. Méx. Ppia. Pue.	62.98																			
San Martín Texmelucan	70.00	1	0	13470	13.7	76.2	1.2	6.3	1.0	0.5	0.3	0.5	0.3	89.9	1.2	8.9	0.077	0.520	19.301515	-98.452735
X. C. México - Puebla (Cuota)	74.10	3	1	10536	8.3	79.3	1.4	6.0	1.0	2.3	0.6	0.9	0.2	87.6	1.4	11.0	0.096	0.566	19.254800	-98.428548
X. C. México - Puebla (Cuota)	74.10	3	2	10149	8.2	80.0	1.2	6.2	1.2	2.0	0.5	0.6	0.1	88.2	1.2	10.6	0.084	0.566	19.254810	-98.428445
Huejotzingo	88.00	1	1	7287	8.1	79.9	3.5	6.5	1.0	0.8	0.1	0.1	0.0	88.0	3.5	8.5	0.079	0.508	19.177302	-98.415426
Huejotzingo	88.00	1	2	7040	8.0	80.2	3.3	6.6	0.9	0.8	0.1	0.1	0.0	88.2	3.3	8.5	0.082	0.508	19.177322	-98.415309
Huejotzingo	88.00	3	1	6138	5.4	84.0	1.2	6.1	1.3	1.4	0.3	0.2	0.1	89.4	1.2	9.4	0.091	0.527	19.145773	-98.387745
Huejotzingo	88.00	3	2	6401	5.3	84.1	1.3	5.9	1.4	1.4	0.5	0.1	0.0	89.4	1.3	9.3	0.102	0.527	19.145852	-98.387719
T. Izq. Aeropuerto	92.80	1	1	7110	6.1	82.3	2.5	4.9	2.0	1.7	0.2	0.3	0.0	88.4	2.5	9.1	0.084	0.527	19.136222	-98.377229
T. Izq. Aeropuerto	92.80	1	2	6992	6.3	82.7	2.2	5.1	1.7	1.6	0.3	0.1	0.0	89.0	2.2	8.8	0.085	0.527	19.136298	-98.377137
T. Der. Cholula	101.00	1	1	14524	6.2	86.8	1.5	2.8	1.4	0.9	0.2	0.1	0.1	93.0	1.5	5.5	0.096	0.592	19.076646	-98.322462
T. Der. Cholula	101.00	1	2	13923	6.2	86.6	1.5	3.1	1.2	0.9	0.3	0.1	0.1	92.8	1.5	5.7	0.086	0.592	19.076709	-98.322410
T. Der. Cholula	101.00	3	1	19042	5.7	88.5	0.7	2.5	1.3	0.9	0.3	0.1	0.0	94.2	0.7	5.1	0.079	0.544	19.070229	-98.312715
T. Der. Cholula	101.00	3	2	20038	5.5	88.9	0.4	2.5	1.4	1.0	0.2	0.1	0.0	94.4	0.4	5.2	0.071	0.544	19.070411	-98.312795
Puebla	131.00																			

4 CARR: México - Toluca

CLAVE: 00447

RUTA: MEX-015

AÑO: 2025

LUGAR	ESTACION				CLASIFICACION VEHICULAR EN PORCIENTO										COORDENADAS					
	KM	TE	SC	TDPA	M	A	B	C2	C3	T3S2	T3S3	T3S2R4	OTROS	A	B	C	K'	D	LATITUD	LONGITUD
México	0.00																			
Ent. Constituyentes y Reforma	12.84	3	1	43084	4.0	86.6	1.7	3.1	0.6	2.8	0.7	0.4	0.1	90.6	1.7	7.7	0.067	0.500	19.386143	-99.247512
Ent. Constituyentes y Reforma	12.84	3	2	43154	3.8	87.8	1.5	2.8	0.6	2.4	0.6	0.4	0.1	91.6	1.5	6.9	0.077	0.500	19.385306	-99.248302
T. Der. Cuajimalpa (1° Acceso)	20.56	1	1	42479	3.2	88.5	1.8	2.7	0.7	2.0	0.7	0.3	0.1	91.7	1.8	6.5	0.056	0.509	19.364482	-99.277585
T. Der. Cuajimalpa (1° Acceso)	20.56	1	2	44293	3.2	88.7	1.5	2.7	0.7	1.9	0.8	0.4	0.1	91.9	1.5	6.6	0.067	0.509	19.364354	-99.277752
T. Izq. Desierto de Los Leones	23.96	1	1	34627	3.5	85.8	2.8	4.7	0.8	0.9	0.6	0.7	0.2	89.3	2.8	7.9	0.093	0.510	19.338661	-99.311266
T. Izq. Desierto de Los Leones	23.96	1	2	36212	3.0	86.9	2.3	4.4	0.8	1.1	0.6	0.7	0.2	89.9	2.3	7.8	0.077	0.510	19.339063	-99.311110
Lim. Edos. Term. CDMX Ppia. Méx.	33.44																			
T. Der. Huixquilucan	33.98	1	1	23715	1.9	84.6	1.5	8.3	1.2	1.7	0.3	0.4	0.1	86.5	1.5	12.0	0.087	0.505	19.295850	-99.359938

CIUDAD DE MÉXICO

4 CARR: México - Toluca

CLAVE: 00447

RUTA: MEX-015

AÑO: 2025

LUGAR	ESTACION				CLASIFICACION VEHICULAR EN PORCIENTO														COORDENADAS	
	KM	TE	SC	TDPA	M	A	B	C2	C3	T3S2	T3S3	T3S2R4	OTROS	A	B	C	K'	D	LATITUD	LONGITUD
T. Der. Huixquilucan	33.98	1	2	23252	1.7	84.9	1.6	8.3	1.3	1.4	0.3	0.4	0.1	86.6	1.6	11.8	0.106	0.505	19.295740	-99.357652
T. C. Constituyentes - La Marquesa (Cuota)	35.28																			
T. C. La Marquesa - Lerma (Cuota)	36.98																			
X. C. Amomolulco - Stgo. Tianguistenco	47.26	1	1	50179	1.4	89.8	2.5	2.3	0.9	2.0	0.3	0.6	0.2	91.2	2.5	6.3	0.084	0.505	19.282610	-99.477276
X. C. Amomolulco - Stgo. Tianguistenco	47.26	1	2	49042	1.3	89.7	2.5	2.2	1.0	2.1	0.3	0.7	0.2	91.0	2.5	6.5	0.089	0.505	19.281785	-99.484646
T. Der. Lerma - Izq. San Pedro Tultepec	51.71	1	1	91187	2.3	84.9	2.2	5.7	1.4	1.5	0.4	1.3	0.3	87.2	2.2	10.6	0.069	0.511	19.283948	-99.503563
T. Der. Lerma - Izq. San Pedro Tultepec	51.71	1	2	86386	2.5	84.5	2.0	6.3	1.3	1.5	0.2	1.4	0.3	87.0	2.0	11.0	0.077	0.511	19.280353	-99.502566
T. Izq. San Mateo Atenco (Alta)	52.00	3	1	73797	7.8	90.2	0.1	1.9	0.0	0.0	0.0	0.0	0.0	98.0	0.1	1.9	0.071	0.516	19.285904	-99.535820
T. Izq. San Mateo Atenco (Baja)	52.00	3	1	18243	11.7	61.5	3.9	12.7	2.9	5.3	0.4	1.3	0.3	73.2	3.9	22.9	0.073	0.514	19.286322	-99.535223
T. Izq. San Mateo Atenco (Baja)	52.00	3	2	17255	11.9	59.8	4.0	13.1	3.5	5.4	0.4	1.4	0.5	71.7	4.0	24.3	0.065	0.514	19.285176	-99.532603
T. Izq. San Mateo Atenco (Alta)	52.00	3	2	79626	7.4	90.4	0.1	2.1	0.0	0.0	0.0	0.0	0.0	97.8	0.1	2.1	0.074	0.516	19.285554	-99.535876
X. C. Libramiento de Toluca (Baja)	62.20	1	1	21343	7.4	73.1	3.6	8.4	2.3	2.6	0.6	1.5	0.5	80.5	3.6	15.9	0.075	0.518	19.288545	-99.624709
X. C. Libramiento de Toluca (Alta)	62.20	1	1	77552	4.2	95.8	0.0	0.0	0.0	0.0	0.0	0.0	0.0	100.0	0.0	0.0	0.077	0.508	19.288076	-99.620006
X. C. Libramiento de Toluca (Alta)	62.20	1	2	80679	4.2	95.8	0.0	0.0	0.0	0.0	0.0	0.0	0.0	100.0	0.0	0.0	0.076	0.508	19.287783	-99.621976
X. C. Libramiento de Toluca (Baja)	62.20	1	2	19851	7.3	72.7	3.8	8.6	2.5	2.6	0.6	1.4	0.5	80.0	3.8	16.2	0.096	0.518	19.287546	-99.623125
Toluca	66.00																			

5 CARR: San Gregorio - Oaxtepec

CLAVE: 00901

RUTA: MEX-113

AÑO: 2025

LUGAR	ESTACION				CLASIFICACION VEHICULAR EN PORCIENTO														COORDENADAS	
	KM	TE	SC	TDPA	M	A	B	C2	C3	T3S2	T3S3	T3S2R4	OTROS	A	B	C	K'	D	LATITUD	LONGITUD
San Gregorio	0.00	3	0	23748	6.5	86.4	1.2	4.8	0.4	0.3	0.1	0.2	0.1	92.9	1.2	5.9	0.067	0.506	19.240525	-99.054879
X. C. Milpa Alta - San Lorenzo Tlacoyucan	9.00	3	0	7744	3.9	87.2	1.2	5.1	0.7	0.6	0.8	0.3	0.2	91.1	1.2	7.7	0.089	0.517	19.180655	-99.029538
Lim. Edos. Term. CDMX Ppia. Méx.	18.80																			
Lim. Edos. Term. Méx. Ppia. Mor.	28.50																			
T. Der. San Felipe Neri	33.80	1	0	4266	6.4	86.3	1.9	3.9	0.8	0.4	0.1	0.2	0.0	92.7	1.9	5.4	0.124	0.641	19.046040	-98.936047
T. Der. Tlalnepantla	40.50	3	0	5687	7.4	82.4	0.8	7.5	0.6	0.6	0.4	0.2	0.1	89.8	0.8	9.4	0.098	0.546	19.004074	-98.990106
Tlayacapan	48.50	3	0	13218	10.7	83.1	0.4	4.1	0.5	0.4	0.3	0.4	0.1	93.8	0.4	5.8	0.086	0.507	18.938501	-98.973238
T. Der. Yautepec	53.00	1	0	13993	10.8	83.4	0.3	3.9	0.3	0.5	0.4	0.3	0.1	94.2	0.3	5.5	0.083	0.504	18.925582	-98.967998
T. Der. Yautepec	53.00	3	1	8943	12.8	79.7	0.5	5.3	0.5	0.4	0.2	0.4	0.2	92.5	0.5	7.0	0.091	0.509	18.916023	-98.970106
T. Der. Yautepec	53.00	3	2	8342	12.6	80.1	0.3	5.1	0.4	0.6	0.2	0.4	0.3	92.7	0.3	7.0	0.082	0.509	18.916007	-98.970059
Oaxtepec	56.00																			

CIUDAD DE MÉXICO

6 CARR: México - Cuernavaca (Cuota)

CLAVE: 00041

RUTA: MEX-095D

AÑO: 2025

LUGAR	ESTACION				CLASIFICACION VEHICULAR EN PORCIENTO										COORDENADAS					
	KM	TE	SC	TDPA	M	A	B	C2	C3	T3S2	T3S3	T3S2R4	OTROS	A	B	C	K'	D	LATITUD	LONGITUD
México	0.00																			
T. C. México - Cuernavaca (Libre)	18.65	3	1	35973	4.1	85.0	2.2	4.9	0.9	1.7	0.4	0.6	0.2	89.1	2.2	8.7	0.067	0.550	19.264272	-99.165803
T. C. México - Cuernavaca (Libre)	18.65	3	2	33882	4.1	85.0	2.2	4.9	0.9	1.7	0.4	0.6	0.2	89.1	2.2	8.7	0.072	0.550	19.267648	-99.164434
Plaza de Cobro Tlalpan	23.36	2	1	14818	2.8	82.5	3.5	3.9	2.3	3.1	0.6	0.9	0.4	85.3	3.5	11.2	0.145	0.500	19.242519	-99.148716
Plaza de Cobro Tlalpan	23.36	2	2	14818	2.8	82.5	3.5	3.9	2.3	3.1	0.6	0.9	0.4	85.3	3.5	11.2	0.145	0.500	19.242519	-99.148716
Lim. Edos. Term. CDMX Ppia. Mor.	47.09																			
Tres Marías	53.00	1	1	23728	2.2	84.1	4.4	4.1	1.0	2.3	0.7	0.9	0.3	86.3	4.4	9.3	0.108	0.730	19.077388	-99.233551
Tres Marías	53.00	1	2	21393	2.2	84.2	4.4	4.1	0.9	2.3	0.7	0.9	0.3	86.4	4.4	9.2	0.141	0.730	19.079128	-99.232769
Tres Marías	53.00	3	1	20933	1.2	84.2	4.4	4.6	1.4	2.8	0.5	0.6	0.3	85.4	4.4	10.2	0.095	0.720	19.043397	-99.233567
Tres Marías	53.00	3	2	23102	1.2	84.2	4.4	4.6	1.4	2.8	0.5	0.6	0.3	85.4	4.4	10.2	0.116	0.720	19.043723	-99.233710
T. Izq. Cuautla	70.50	1	1	21184	2.1	85.9	4.1	3.6	1.0	2.0	0.7	0.4	0.2	88.0	4.1	7.9	0.120	0.648	19.018202	-99.145016
T. Izq. Cuautla	70.50	1	2	23326	2.3	85.4	4.2	3.4	0.9	2.4	0.5	0.7	0.2	87.7	4.2	8.1	0.136	0.648	19.014475	-99.153851
T. Der. A Glorieta La Paloma	79.26	1	1	19836	2.3	88.0	1.7	2.8	1.5	2.1	0.4	0.8	0.4	90.3	1.7	8.0	0.075	0.695	18.982301	-99.219506
T. Der. A Glorieta La Paloma	79.26	1	2	22561	2.5	87.9	2.0	3.0	1.3	1.9	0.3	0.8	0.3	90.4	2.0	7.6	0.109	0.695	18.982186	-99.219494
Libramiento de Cuernavaca	80.50	1	1	25703	3.2	85.8	2.2	4.2	1.2	2.0	0.3	0.9	0.2	89.0	2.2	8.8	0.082	0.547	18.967226	-99.236638
Libramiento de Cuernavaca	80.50	1	2	27927	3.0	85.7	1.9	4.5	1.4	2.1	0.3	0.9	0.2	88.7	1.9	9.4	0.089	0.547	18.967374	-99.236603

7 CARR: México - Pachuca (Cuota)

CLAVE: 00432

RUTA: MEX-085D

AÑO: 2025

LUGAR	ESTACION				CLASIFICACION VEHICULAR EN PORCIENTO										COORDENADAS					
	KM	TE	SC	TDPA	M	A	B	C2	C3	T3S2	T3S3	T3S2R4	OTROS	A	B	C	K'	D	LATITUD	LONGITUD
T. C. México - Pachuca (Libre)	0.00																			
Lim. Edos. Term. CDMX Ppia. Méx.	9.86																			
Plaza de Cobro Ojo de Agua	25.00	2	1	35982	3.4	85.9	4.8	2.3	1.5	1.5	0.2	0.3	0.1	89.3	4.8	5.9	0.081	0.500	19.618737	-99.029315
Plaza de Cobro Ojo de Agua	25.00	2	2	35982	3.4	85.9	4.8	2.3	1.5	1.5	0.2	0.3	0.1	89.3	4.8	5.9	0.081	0.500	19.618737	-99.029315
Plaza de Cobro Ojo de Agua	25.00	3	1	40359	3.2	85.6	2.1	5.4	1.1	1.6	0.3	0.5	0.2	88.8	2.1	9.1	0.077	0.505	19.635307	-99.020636
Plaza de Cobro Ojo de Agua	25.00	3	2	39575	3.0	86.2	1.9	5.3	1.0	1.4	0.3	0.7	0.2	89.2	1.9	8.9	0.073	0.505	19.633746	-99.021753
X. C. México - Pachuca (Libre) Ent. Ojo de Agua	30.62	3	1	34665	3.6	85.1	2.3	4.6	1.4	1.6	0.3	0.8	0.3	88.7	2.3	9.0	0.070	0.500	19.671289	-98.995122
X. C. México - Pachuca (Libre) Ent. Ojo de Agua	30.62	3	2	34633	3.8	84.6	2.5	4.8	1.3	1.7	0.4	0.6	0.3	88.4	2.5	9.1	0.086	0.500	19.675433	-98.991007
T. Izq. Tecámac	35.62	3	1	33809	1.6	87.4	2.7	3.1	2.0	2.2	0.5	0.4	0.1	89.0	2.7	8.3	0.066	0.520	19.703357	-98.969497
T. Izq. Tecámac	35.62	3	2	36898	1.8	87.8	2.5	3.0	2.2	1.9	0.4	0.3	0.1	89.6	2.5	7.9	0.087	0.520	19.705457	-98.968424
T. Izq. AIFA	40.50	3	1	36641	2.7	88.6	1.8	2.8	1.6	1.8	0.4	0.2	0.1	91.3	1.8	6.9	0.077	0.508	19.744422	-98.945996
T. Izq. AIFA	40.50	3	2	35422	2.6	88.9	1.7	2.7	1.5	1.9	0.3	0.3	0.1	91.5	1.7	6.8	0.087	0.508	19.743813	-98.946111
Lim. Edos. Term. Méx. Ppia. Hgo.	49.60																			
X. C. Otumba - Tizayuca	53.45	1	1	38678	2.0	88.7	2.1	2.5	1.3	2.2	0.5	0.4	0.3	90.7	2.1	7.2	0.086	0.515	19.826751	-98.949363

CIUDAD DE MÉXICO

7 CARR: México - Pachuca (Cuota)

CLAVE: 00432

RUTA: MEX-085D

AÑO: 2025

LUGAR	ESTACION				CLASIFICACION VEHICULAR EN PORCIENTO										COORDENADAS					
	KM	TE	SC	TDPA	M	A	B	C2	C3	T3S2	T3S3	T3S2R4	OTROS	A	B	C	K'	D	LATITUD	LONGITUD
X. C. Otumba - Tizayuca	53.45	1	2	36126	1.9	89.5	2.0	2.4	1.2	2.1	0.4	0.3	0.2	91.4	2.0	6.6	0.125	0.515	19.827443	-98.949661
T. C. México - Pachuca (Libre)	60.50	1	1	23993	2.5	88.7	2.4	2.1	1.2	2.0	0.5	0.4	0.2	91.2	2.4	6.4	0.082	0.507	19.883677	-98.937499
T. C. México - Pachuca (Libre)	60.50	1	2	24701	2.7	89.1	2.3	2.0	1.1	1.9	0.4	0.3	0.2	91.8	2.3	5.9	0.097	0.507	19.881569	-98.937781

8 CARR: México - Puebla (Cuota)

CLAVE: 00450

RUTA: MEX-150D

AÑO: 2025

LUGAR	ESTACION				CLASIFICACION VEHICULAR EN PORCIENTO										COORDENADAS					
	KM	TE	SC	TDPA	M	A	B	C2	C3	T3S2	T3S3	T3S2R4	OTROS	A	B	C	K'	D	LATITUD	LONGITUD
México	0.00																			
Ent Concordía (T. Izq. Los Reyes) Central	17.00	3	1	80901	3.4	86.3	2.1	3.2	1.4	1.7	0.8	0.6	0.5	89.7	2.1	8.2	0.063	0.582	19.351809	-98.987693
Ent Concordía (T. Izq. Los Reyes) Lateral	17.00	3	1	28927	4.8	82.5	1.8	7.9	0.7	1.4	0.6	0.2	0.1	87.3	1.8	10.9	0.073	0.582	19.351140	-98.987199
Ent Concordía (T. Izq. Los Reyes) Central	17.00	3	2	113679	3.5	86.7	1.8	3.2	1.2	1.7	0.7	0.7	0.5	90.2	1.8	8.0	0.066	0.582	19.354153	-98.990021
Lim. Edos. Term. CDMX Ppia. Méx.	17.51																			
Av. Las Torres (Eje 6) Central	19.27	1	1	77487	4.2	85.9	2.2	4.1	1.1	1.7	0.5	0.1	0.2	90.1	2.2	7.7	0.067	0.587	19.348086	-98.983801
Av. Las Torres (Eje 6) Lateral	19.27	1	1	29591	4.6	77.7	1.9	12.3	1.1	1.4	0.6	0.3	0.1	82.3	1.9	15.8	0.071	0.587	19.348301	-98.984205
Av. Las Torres (Eje 6) Central	19.27	1	2	112260	4.2	86.0	1.6	4.4	1.0	1.9	0.4	0.2	0.3	90.2	1.6	8.2	0.059	0.587	19.350607	-98.986307
Av. Las Torres (Eje 6) Lateral	19.27	3	1	38249	5.4	77.4	2.3	10.7	1.2	1.6	0.5	0.7	0.2	82.8	2.3	14.9	0.067	0.583	19.339765	-98.976568
Av. Las Torres (Eje 6) Central	19.27	3	1	74471	3.5	86.1	1.8	3.9	1.4	1.3	0.9	0.6	0.5	89.6	1.8	8.6	0.066	0.583	19.339804	-98.976460
Av. Las Torres (Eje 6) Central	19.27	3	2	114208	3.1	86.8	1.8	4.0	1.4	1.4	0.8	0.3	0.4	89.9	1.8	8.3	0.064	0.583	19.342215	-98.977844
Eje 10 Sur (Central)	22.80	1	1	95507	2.4	90.9	1.1	3.0	0.9	0.8	0.5	0.1	0.3	93.3	1.1	5.6	0.060	0.585	19.329495	-98.965429
Eje 10 Sur (Lateral)	22.80	1	1	38043	5.0	81.2	1.7	9.7	0.8	1.0	0.2	0.3	0.1	86.2	1.7	12.1	0.081	0.585	19.329420	-98.965491
Eje 10 Sur (Central)	22.80	1	2	116808	2.4	90.9	1.1	3.0	0.9	0.8	0.5	0.1	0.3	93.3	1.1	5.6	0.074	0.585	19.331730	-98.967965
Eje 10 Sur (Central)	22.80	3	1	49990	2.8	84.9	2.6	5.6	1.2	2.0	0.4	0.2	0.3	87.7	2.6	9.7	0.063	0.516	19.315253	-98.948699
Eje 10 Sur (Lateral)	22.80	3	1	47059	5.0	81.1	2.0	9.7	0.7	0.8	0.4	0.2	0.1	86.1	2.0	11.9	0.065	0.509	19.315183	-98.948783
Eje 10 Sur (Lateral)	22.80	3	2	48924	4.8	81.6	1.8	9.9	0.6	0.7	0.3	0.2	0.1	86.4	1.8	11.8	0.064	0.509	19.315506	-98.948416
Eje 10 Sur (Central)	22.80	3	2	53771	2.9	84.4	2.3	5.8	1.4	2.1	0.6	0.2	0.3	87.3	2.3	10.4	0.071	0.516	19.315429	-98.948475
X. C. Santa Bárbara - Izúcar de Matamoros (Lateral)	32.14	1	1	16254	3.2	87.2	1.2	5.1	1.0	1.3	0.5	0.3	0.2	90.4	1.2	8.4	0.072	0.503	19.292121	-98.892023
X. C. Santa Bárbara - Izúcar de Matamoros (Central)	32.14	1	1	38517	3.2	86.5	3.5	3.1	1.5	1.2	0.5	0.3	0.2	89.7	3.5	6.8	0.059	0.507	19.292268	-98.892016
X. C. Santa Bárbara - Izúcar de Matamoros (Central)	32.14	1	2	39723	3.4	86.6	3.0	2.9	1.7	1.5	0.4	0.2	0.3	90.0	3.0	7.0	0.066	0.507	19.292434	-98.891957
X. C. Santa Bárbara - Izúcar de Matamoros (Lateral)	32.14	1	2	16477	4.9	86.0	1.3	4.8	1.0	1.1	0.5	0.2	0.2	90.9	1.3	7.8	0.077	0.503	19.292575	-98.891976
X. C. Santa Bárbara - Izúcar de Matamoros (Central)	32.14	3	1	13531	0.9	76.4	5.4	9.3	1.7	4.0	1.5	0.5	0.3	77.3	5.4	17.3	0.073	0.505	19.294764	-98.876243
X. C. Santa Bárbara - Izúcar de Matamoros (Lateral)	32.14	3	1	1441	3.2	70.4	4.6	6.2	2.2	6.8	2.3	4.1	0.2	73.6	4.6	21.8	0.074	0.523	19.294616	-98.876201
X. C. Santa Bárbara - Izúcar de Matamoros (Central)	32.14	3	2	13238	1.3	73.1	5.7	10.4	2.2	4.7	1.8	0.5	0.3	74.4	5.7	19.9	0.096	0.505	19.295001	-98.875802
X. C. Santa Bárbara - Izúcar de Matamoros (Lateral)	32.14	3	2	1581	3.2	69.9	5.8	4.9	2.5	6.5	2.2	4.7	0.3	73.1	5.8	21.1	0.086	0.523	19.295136	-98.875843
Plaza de Cobro San Marcos	33.30	2	1	16859	0.7	75.4	4.6	4.8	3.5	7.4	0.6	2.5	0.5	76.1	4.6	19.3	0.068	0.500	19.296272	-98.870712

CIUDAD DE MÉXICO

8 CARR: México - Puebla (Cuota)

CLAVE: 00450

RUTA: MEX-150D

AÑO: 2025

LUGAR	ESTACION				CLASIFICACION VEHICULAR EN PORCIENTO										COORDENADAS					
	KM	TE	SC	TDPA	M	A	B	C2	C3	T3S2	T3S3	T3S2R4	OTROS	A	B	C	K'	D	LATITUD	LONGITUD
Plaza de Cobro San Marcos	33.30	2	2	16859	0.7	75.4	4.6	4.8	3.5	7.4	0.6	2.5	0.5	76.1	4.6	19.3	0.068	0.500	19.296272	-98.870712
T. Izq. Río Frío	63.79	3	1	20863	0.9	79.5	4.7	6.0	1.8	4.4	0.7	1.7	0.3	80.4	4.7	14.9	0.079	0.505	19.350607	-98.658686
T. Izq. Río Frío	63.79	3	2	21324	1.1	78.4	5.2	6.0	2.0	4.5	0.8	1.7	0.3	79.5	5.2	15.3	0.075	0.505	19.351601	-98.660177
Lim. Edos. Term. Méx. Ppia. Pue.	65.46																			
T. Der. A San Rafael Ixtapalucan	76.80	3	1	24189	2.5	74.5	7.3	4.9	2.1	5.7	0.7	1.8	0.5	77.0	7.3	15.7	0.067	0.612	19.330436	-98.541976
T. Der. A San Rafael Ixtapalucan	76.80	3	2	25478	2.7	73.7	7.3	5.0	2.4	5.4	0.8	2.0	0.7	76.4	7.3	16.3	0.084	0.612	19.324664	-98.525181
T. Izq. Tlaxcala	90.61	1	1	22801	2.6	74.9	6.4	4.7	2.3	5.8	0.8	2.0	0.5	77.5	6.4	16.1	0.070	0.639	19.274057	-98.436337
T. Izq. Tlaxcala	90.61	1	2	23871	2.4	74.7	6.8	4.7	2.2	5.9	0.9	1.9	0.5	77.1	6.8	16.1	0.084	0.639	19.274141	-98.436221
T. Izq. Tlaxcala	90.61	3	1	25663	1.5	74.7	5.2	7.5	1.8	6.0	1.0	2.1	0.2	76.2	5.2	18.6	0.063	0.563	19.261672	-98.417277
T. Izq. Tlaxcala	90.61	3	2	27995	1.1	72.7	5.4	7.6	2.0	6.4	1.5	3.1	0.2	73.8	5.4	20.8	0.066	0.563	19.261880	-98.417331
Plaza de Cobro San Martín Texmelucan	91.17	2	1	25585	0.9	70.3	4.2	4.7	4.2	10.2	1.1	3.6	0.8	71.2	4.2	24.6	0.068	0.500	19.241190	-98.385786
Plaza de Cobro San Martín Texmelucan	91.17	2	2	25585	0.9	70.3	4.2	4.7	4.2	10.2	1.1	3.6	0.8	71.2	4.2	24.6	0.068	0.500	19.241190	-98.385786
Lim. Edos. Term. Pue. Ppia. Tlax.	99.11																			
T. Der. Aeropuerto Internacional De Puebla	101.10	3	1	35664	1.8	79.7	4.0	4.2	2.0	5.1	1.0	1.4	0.8	81.5	4.0	14.5	0.077	0.574	19.210744	-98.351394
T. Der. Aeropuerto Internacional De Puebla	101.10	3	2	36291	1.5	77.7	4.5	5.1	2.2	5.4	1.2	1.5	0.9	79.2	4.5	16.3	0.075	0.574	19.209300	-98.349408
X. C. Xoxtla - Huactzinco	107.98	1	1	39135	1.2	78.4	3.5	6.0	1.9	5.5	1.5	1.3	0.7	79.6	3.5	16.9	0.080	0.550	19.182855	-98.317460
X. C. Xoxtla - Huactzinco	107.98	1	2	39880	1.3	77.7	3.6	6.0	2.2	5.7	1.5	1.3	0.7	79.0	3.6	17.4	0.066	0.550	19.179867	-98.313618
X. C. Xoxtla - Huactzinco	107.98	3	1	42335	4.5	77.4	2.8	6.5	1.4	4.3	0.9	1.8	0.4	81.9	2.8	15.3	0.062	0.507	19.163610	-98.296951
X. C. Xoxtla - Huactzinco	107.98	3	2	41659	4.6	75.1	3.0	7.6	1.5	4.8	1.1	1.9	0.4	79.7	3.0	17.3	0.067	0.507	19.166001	-98.298460
Lim. Edos. Term. Tlax. Ppia. Pue.	108.00																			
Anillo Periferico Poniente de Puebla (Central)	114.00	3	1	31692	2.3	79.3	3.5	5.1	2.3	4.0	0.7	2.4	0.4	81.6	3.5	14.9	0.073	0.520	19.126990	-98.263724
Anillo Periferico Poniente de Puebla (Lateral)	114.00	3	1	33693	2.5	81.5	2.6	5.2	1.9	3.8	1.2	0.9	0.4	84.0	2.6	13.4	0.073	0.520	19.128300	-98.265094
Anillo Periferico Poniente de Puebla (Central)	114.00	3	2	30294	2.1	79.4	3.4	5.2	2.4	4.0	0.7	2.4	0.4	81.5	3.4	15.1	0.075	0.520	19.127049	-98.263659
Anillo Periferico Poniente de Puebla (Lateral)	114.00	3	2	31515	2.4	81.9	2.4	5.1	1.8	4.0	1.2	0.9	0.3	84.3	2.4	13.3	0.078	0.520	19.127370	-98.263821
Boulevard Hermanos Serdán	120.46	3	1	61356	1.6	84.4	2.6	5.0	1.8	2.5	1.0	0.8	0.3	86.0	2.6	11.4	0.054	0.556	19.089363	-98.216917
Boulevard Hermanos Serdán	120.46	3	2	60678	1.7	83.3	2.8	5.1	1.8	2.8	1.2	0.8	0.5	85.0	2.8	12.2	0.068	0.556	19.089505	-98.216872
X. C. Puebla - Tlaxcala (Central)	123.00	3	1	51489	2.2	83.6	2.5	5.0	1.9	2.9	0.7	0.9	0.3	85.8	2.5	11.7	0.058	0.531	19.086076	-98.200215
X. C. Puebla - Tlaxcala (Lateral)	123.00	3	1	31449	2.3	88.3	1.7	5.3	0.9	0.7	0.3	0.3	0.2	90.6	1.7	7.7	0.072	0.531	19.085935	-98.200094
X. C. Puebla - Tlaxcala (Central)	123.00	3	2	40515	2.0	82.6	2.5	5.0	2.0	3.8	0.9	0.9	0.3	84.6	2.5	12.9	0.079	0.531	19.085988	-98.199425
X. C. Puebla - Tlaxcala (Lateral)	123.00	3	2	29913	2.3	88.0	1.7	5.5	1.0	0.7	0.3	0.3	0.2	90.3	1.7	8.0	0.083	0.531	19.086099	-98.199241
T. C. Puebla - Belem	124.90																			

CIUDAD DE MÉXICO

9 CARR: México - Toluca (Cuota)

CLAVE: 00446

RUTA: MEX-015D

AÑO: 2025

LUGAR	ESTACION				CLASIFICACION VEHICULAR EN PORCIENTO														COORDENADAS	
	KM	TE	SC	TDPA	M	A	B	C2	C3	T3S2	T3S3	T3S2R4	OTROS	A	B	C	K'	D	LATITUD	LONGITUD
T. C. México - Toluca (Libre) (Puente Conafut)	14.00	3	1	29000	0.6	88.6	3.0	3.8	0.8	1.5	1.0	0.5	0.2	89.2	3.0	7.8	0.087	0.517	19.379946	-99.252085
T. C. México - Toluca (Libre) (Puente Conafut)	14.00	3	2	25451	0.6	88.5	2.7	3.7	0.8	1.8	1.2	0.5	0.2	89.1	2.7	8.2	0.098	0.517	19.381176	-99.250106
Plaza de Cobro Santa Fe	18.44	1	1	26060	0.9	87.6	3.4	4.2	0.7	1.5	1.0	0.5	0.2	88.5	3.4	8.1	0.093	0.505	19.368914	-99.266436
Plaza de Cobro Santa Fe	18.44	1	2	26626	0.8	87.8	3.2	4.2	0.6	1.6	1.1	0.5	0.2	88.6	3.2	8.2	0.100	0.505	19.370685	-99.265516
Plaza de Cobro Santa Fe	18.44	3	1	20965	0.8	88.0	2.8	4.8	0.7	1.2	1.0	0.4	0.3	88.8	2.8	8.4	0.091	0.516	19.356083	-99.277891
Plaza de Cobro Santa Fe	18.44	3	2	19701	0.7	88.0	3.0	4.4	0.8	1.3	1.0	0.5	0.3	88.7	3.0	8.3	0.102	0.516	19.355995	-99.277751
Plaza de Cobro La Venta	24.24	1	1	31979	2.2	84.1	2.8	6.4	0.9	2.1	0.7	0.5	0.3	86.3	2.8	10.9	0.092	0.507	19.334749	-99.306499
Plaza de Cobro La Venta	24.24	1	2	33001	1.9	84.3	3.3	6.2	0.9	1.9	0.8	0.4	0.3	86.2	3.3	10.5	0.089	0.507	19.334582	-99.306266
Plaza de Cobro La Venta	24.24	2	1	24628	0.9	90.2	3.9	2.2	0.9	1.2	0.2	0.4	0.1	91.1	3.9	5.0	0.089	0.500	19.332816	-99.314301
Plaza de Cobro La Venta	24.24	2	2	24628	0.9	90.2	3.9	2.2	0.9	1.2	0.2	0.4	0.1	91.1	3.9	5.0	0.089	0.500	19.332816	-99.314301
Plaza de Cobro La Venta	24.24	3	1	34446	1.9	83.8	3.0	6.0	1.3	2.4	0.6	0.7	0.3	85.7	3.0	11.3	0.105	0.521	19.318787	-99.321964
Plaza de Cobro La Venta	24.24	3	2	31428	2.2	83.4	3.2	5.8	1.2	2.6	0.7	0.6	0.3	85.6	3.2	11.2	0.080	0.521	19.325375	-99.317863
Lim. Edos. Term. CDMX Ppia. Méx.	32.00																			
T. C. México - Toluca (Libre) (La Marquesa)	32.65	1	1	30523	2.6	84.0	3.9	2.9	1.1	3.5	0.4	1.4	0.2	86.6	3.9	9.5	0.085	0.506	19.300488	-99.365282
T. C. México - Toluca (Libre) (La Marquesa)	32.65	1	2	29754	2.6	82.8	4.5	3.1	1.0	3.7	0.4	1.5	0.4	85.4	4.5	10.1	0.116	0.506	19.299187	-99.362750

10 CARR: México - Querétaro (Cuota)

CLAVE: 00411

RUTA: MEX-057-MEX-057D

AÑO: 2025

LUGAR	ESTACION				CLASIFICACION VEHICULAR EN PORCIENTO														COORDENADAS	
	KM	TE	SC	TDPA	M	A	B	C2	C3	T3S2	T3S3	T3S2R4	OTROS	A	B	C	K'	D	LATITUD	LONGITUD
México	0.00																			
Lim. Edos. Term. CDMX Ppia. Méx.	11.30																			
Lechería	29.41																			
Plaza de Cobro Tepetzotlán	43.01	2	1	33105	0.6	74.5	3.6	4.2	3.1	10.9	0.6	2.0	0.5	75.1	3.6	21.3	0.077	0.500	19.715361	-99.207448
Plaza de Cobro Tepetzotlán	43.01	2	2	33105	0.6	74.5	3.6	4.2	3.1	10.9	0.6	2.0	0.5	75.1	3.6	21.3	0.077	0.500	19.715361	-99.207448
Ent. Jorobas	56.18	1	1	35058	1.4	67.5	4.6	7.8	3.3	11.1	1.4	2.1	0.8	68.9	4.6	26.5	0.071	0.515	19.811452	-99.238518
Ent. Jorobas	56.18	1	2	32877	1.3	67.7	4.8	7.7	3.0	10.9	1.5	2.3	0.8	69.0	4.8	26.2	0.061	0.515	19.801501	-99.234163
Ent. Jorobas	56.18	3	1	47374	3.1	58.7	4.9	8.0	3.4	15.3	2.2	3.4	1.0	61.8	4.9	33.3	0.073	0.502	19.830902	-99.261767
Ent. Jorobas	56.18	3	2	46832	3.2	58.8	5.2	8.0	3.3	15.0	2.0	3.5	1.0	62.0	5.2	32.8	0.065	0.502	19.832742	-99.266979
Lim. Edos. Term. Méx. Ppia. Hgo.	59.85																			
T. Der. Tepeji del Río	69.36	1	1	38226	4.3	69.3	4.4	7.2	2.7	7.7	1.1	2.5	0.8	73.6	4.4	22.0	0.076	0.504	19.862948	-99.313324
T. Der. Tepeji del Río	69.36	1	2	37604	4.0	69.1	4.3	7.4	2.9	7.5	1.2	2.7	0.9	73.1	4.3	22.6	0.072	0.504	19.871090	-99.338581
T. Der. Tepeji del Río	69.36	3	1	34824	4.9	68.8	4.4	6.8	2.8	8.0	1.2	2.4	0.7	73.7	4.4	21.9	0.081	0.507	19.920808	-99.370317
T. Der. Tepeji del Río	69.36	3	2	35899	5.2	68.8	4.6	6.6	3.0	7.8	1.0	2.2	0.8	74.0	4.6	21.4	0.095	0.507	19.920713	-99.370409
T. Izq. Jilotepec	83.75	1	1	34363	5.4	68.7	3.2	7.4	2.8	7.9	1.4	2.7	0.5	74.1	3.2	22.7	0.078	0.518	19.972297	-99.434174

CIUDAD DE MÉXICO

10 CARR: México - Querétaro (Cuota)

CLAVE: 00411

RUTA: MEX-057-MEX-057D

AÑO: 2025

LUGAR	ESTACION				CLASIFICACION VEHICULAR EN PORCIENTO													COORDENADAS		
	KM	TE	SC	TDPA	M	A	B	C2	C3	T3S2	T3S3	T3S2R4	OTROS	A	B	C	K'	D	LATITUD	LONGITUD
T. Izq. Jilotepec	83.75	1	2	31829	5.3	68.7	3.3	7.5	2.7	7.8	1.5	2.6	0.6	74.0	3.3	22.7	0.064	0.518	19.977553	-99.437938
T. Izq. Jilotepec	83.75	3	1	39638	4.8	66.7	5.2	7.5	3.0	7.9	1.7	2.7	0.5	71.5	5.2	23.3	0.080	0.522	19.989624	-99.458452
T. Izq. Jilotepec	83.75	3	2	35936	4.9	66.3	5.3	7.4	3.1	8.0	1.6	2.8	0.6	71.2	5.3	23.5	0.066	0.522	19.989961	-99.460589
Lim. Edos. Term. Hgo. Ppia. Méx.	86.00																			
X. C. Libramiento Norte de La Ciudad de México (Cuota)	89.44	3	1	36629	5.3	66.0	5.3	7.0	3.0	7.3	2.3	3.0	0.8	71.3	5.3	23.4	0.087	0.516	20.005679	-99.501744
X. C. Libramiento Norte de La Ciudad de México (Cuota)	89.44	3	2	39260	5.2	66.6	5.2	6.9	2.9	7.2	2.2	2.9	0.9	71.8	5.2	23.0	0.059	0.516	20.003037	-99.497872
T. Der. Palos Altos	97.80	1	1	34755	4.6	68.2	4.2	7.0	2.7	8.2	1.7	2.6	0.8	72.8	4.2	23.0	0.059	0.515	20.024352	-99.532214
T. Der. Palos Altos	97.80	1	2	37193	4.5	68.6	4.1	6.9	2.6	8.1	1.8	2.7	0.7	73.1	4.1	22.8	0.070	0.515	20.034691	-99.557880
X. C. Jilotepec - Maravillas	107.00	1	1	30424	5.3	64.6	4.0	4.4	3.8	11.3	1.7	4.3	0.6	69.9	4.0	26.1	0.076	0.505	20.080814	-99.619565
X. C. Jilotepec - Maravillas	107.00	1	2	31092	5.2	64.6	4.1	4.3	3.9	11.2	1.6	4.4	0.7	69.8	4.1	26.1	0.090	0.505	20.076023	-99.614275
X. C. Jilotepec - Maravillas	107.00	3	1	35296	4.5	57.3	9.1	5.7	2.5	14.2	1.9	3.9	0.9	61.8	9.1	29.1	0.062	0.513	20.082412	-99.635857
X. C. Jilotepec - Maravillas	107.00	3	2	33383	4.6	57.3	9.0	5.8	2.6	14.3	1.8	3.8	0.8	61.9	9.0	29.1	0.081	0.513	20.082545	-99.633639
T. Izq. Aculco	114.80	1	1	35622	5.2	58.3	7.0	5.0	3.0	14.8	1.8	4.1	0.8	63.5	7.0	29.5	0.071	0.513	20.097492	-99.692855
T. Izq. Aculco	114.80	1	2	37653	5.1	58.2	6.9	5.1	3.1	14.8	1.9	4.2	0.7	63.3	6.9	29.8	0.070	0.513	20.091274	-99.686658
T. Izq. Aculco	114.80	3	1	33068	4.7	58.6	7.5	6.5	2.6	12.8	1.9	4.6	0.8	63.3	7.5	29.2	0.078	0.510	20.109956	-99.707256
T. Izq. Aculco	114.80	3	2	34652	4.6	59.4	7.4	6.4	2.5	12.7	1.8	4.5	0.7	64.0	7.4	28.6	0.078	0.510	20.108553	-99.704275
T. Izq. Encinillas	121.70	1	1	33572	5.0	59.6	7.1	5.0	2.5	14.1	2.2	3.7	0.8	64.6	7.1	28.3	0.067	0.516	20.134260	-99.728711
T. Izq. Encinillas	121.70	1	2	35987	4.9	59.4	7.2	5.1	2.4	14.2	2.3	3.6	0.9	64.3	7.2	28.5	0.074	0.516	20.145772	-99.734718
Polotitlán	133.00	1	1	37344	5.4	60.4	7.5	3.9	3.1	12.9	2.4	3.5	0.9	65.8	7.5	26.7	0.064	0.514	20.218615	-99.801690
Polotitlán	133.00	1	2	35140	5.3	61.0	7.4	3.8	3.0	12.8	2.3	3.6	0.8	66.3	7.4	26.3	0.066	0.514	20.220127	-99.803885
Lim. Edos. Term. Méx. Ppia. Oro.	145.50																			
Plaza de Cobro Palmillas	147.92	2	1	20593	0.5	62.6	3.1	5.7	4.2	17.8	1.5	3.6	1.0	63.1	3.1	33.8	0.077	0.500	20.296112	-99.929069
Plaza de Cobro Palmillas	147.92	2	2	20593	0.5	62.6	3.1	5.7	4.2	17.8	1.5	3.6	1.0	63.1	3.1	33.8	0.077	0.500	20.296112	-99.929069
T. Izq. Toluca	148.50	1	1	31729	4.7	61.7	5.1	4.1	3.1	14.5	1.9	4.1	0.8	66.4	5.1	28.5	0.063	0.501	20.287531	-99.913603
T. Izq. Toluca	148.50	1	2	31643	4.6	61.9	5.0	4.0	3.0	14.6	2.0	4.0	0.9	66.5	5.0	28.5	0.062	0.501	20.284618	-99.909280
T. Izq. Toluca	148.50	3	1	36767	1.6	63.9	6.1	6.7	4.0	12.1	2.1	2.6	0.9	65.5	6.1	28.4	0.052	0.507	20.312937	-99.931635
T. Izq. Toluca	148.50	3	2	37954	1.7	64.5	6.0	6.6	3.9	12.0	2.0	2.5	0.8	66.2	6.0	27.8	0.058	0.507	20.320155	-99.934129
T. Der. Portezuelo	151.53	3	1	41721	5.4	60.4	6.8	5.9	2.7	13.4	1.7	3.1	0.6	65.8	6.8	27.4	0.069	0.515	20.336805	-99.941322
T. Der. Portezuelo	151.53	3	2	44638	5.3	60.8	6.9	5.8	2.6	13.3	1.6	3.0	0.7	66.1	6.9	27.0	0.078	0.515	20.336182	-99.941335
T. Der. Poniente San Juan del Río	164.10	3	1	48201	7.4	65.5	5.4	5.3	2.5	8.4	1.3	3.4	0.8	72.9	5.4	21.7	0.067	0.516	20.373858	-99.994415
T. Der. Poniente San Juan del Río	164.10	3	2	51687	6.7	63.9	5.9	5.3	2.8	9.5	1.5	3.5	0.9	70.6	5.9	23.5	0.074	0.516	20.371958	-99.990429
La Estancia	169.40	1	1	54514	5.3	67.7	5.5	4.7	2.9	9.0	1.5	2.5	0.9	73.0	5.5	21.5	0.064	0.519	20.423616	-100.052184
La Estancia	169.40	1	2	59573	5.0	66.6	6.0	5.3	2.3	9.4	1.5	2.9	1.0	71.6	6.0	22.4	0.064	0.519	20.424627	-100.053668
T. Izq. Acámbaro	170.45	3	1	46171	5.1	66.9	5.6	5.4	2.0	10.2	1.3	2.7	0.8	72.0	5.6	22.4	0.068	0.521	20.447708	-100.079273
T. Izq. Acámbaro	170.45	3	2	50750	5.0	64.9	5.7	5.3	2.4	11.9	1.3	2.7	0.8	69.9	5.7	24.4	0.080	0.521	20.449870	-100.082324

CIUDAD DE MÉXICO

10 CARR: México - Querétaro (Cuota)

CLAVE: 00411

RUTA: MEX-057-MEX-057D

AÑO: 2025

LUGAR	ESTACION				CLASIFICACION VEHICULAR EN PORCIENTO													COORDENADAS		
	KM	TE	SC	TDPA	M	A	B	C2	C3	T3S2	T3S3	T3S2R4	OTROS	A	B	C	K'	D	LATITUD	LONGITUD
T. Izq. El Sauz	176.50	3	1	44655	6.0	65.2	4.3	6.1	2.9	10.1	1.7	2.9	0.8	71.2	4.3	24.5	0.074	0.522	20.477787	-100.110907
T. Izq. El Sauz	176.50	3	2	49266	6.0	66.9	3.5	6.2	2.7	9.7	1.6	2.5	0.9	72.9	3.5	23.6	0.071	0.522	20.497764	-100.133968
T. Der. San Ildefonso	185.30	1	1	47364	4.2	72.0	4.2	6.9	1.1	7.5	1.8	1.5	0.8	76.2	4.2	19.6	0.068	0.536	20.520999	-100.168478
T. Der. San Ildefonso	185.30	1	2	55634	3.8	73.2	4.2	6.4	1.3	7.3	1.7	1.3	0.8	77.0	4.2	18.8	0.072	0.536	20.517352	-100.163871
T. Der. Libramiento Nororiental de Querétaro (Cuota)	192.50	1	1	52291	3.5	74.7	4.2	6.1	1.5	6.5	1.3	1.7	0.5	78.2	4.2	17.6	0.071	0.528	20.552636	-100.215635
T. Der. Libramiento Nororiental de Querétaro (Cuota)	192.50	1	2	59322	3.1	72.9	4.6	7.0	1.7	6.8	1.4	1.9	0.6	76.0	4.6	19.4	0.068	0.528	20.551670	-100.214620
T. Der. Libramiento Nororiental de Querétaro (Cuota)	192.50	3	1	59721	1.9	77.6	2.8	7.9	1.8	4.8	1.7	0.8	0.7	79.5	2.8	17.7	0.069	0.513	20.562649	-100.237209
T. Der. Libramiento Nororiental de Querétaro (Cuota)	192.50	3	2	63486	1.7	75.5	3.0	9.0	1.9	5.3	1.9	0.9	0.8	77.2	3.0	19.8	0.068	0.513	20.561690	-100.234789
T. Der. Libramiento de Querétaro (Blv. Bernardo Quintana)	207.00	1	1	78772	2.2	83.8	1.4	2.8	2.3	4.1	0.6	2.0	0.8	86.0	1.4	12.6	0.071	0.510	20.573484	-100.324051
T. Der. Libramiento de Querétaro (Blv. Bernardo Quintana)	207.00	1	2	82461	1.9	82.6	1.5	3.3	2.6	4.5	0.7	2.0	0.9	84.5	1.5	14.0	0.092	0.510	20.574475	-100.330940
T. Der. Libramiento de Querétaro (Blv. Bernardo Quintana)	207.00	3	1	39181	2.1	91.2	0.6	4.0	0.3	0.7	0.6	0.3	0.2	93.3	0.6	6.1	0.076	0.505	20.579404	-100.375490
T. Der. Libramiento de Querétaro (Blv. Bernardo Quintana)	207.00	3	1	73667	1.8	82.8	1.8	4.4	1.6	4.5	1.5	0.8	0.8	84.6	1.8	13.6	0.067	0.518	20.578195	-100.380764
T. Der. Libramiento de Querétaro (Blv. Bernardo Quintana)	207.00	3	2	80072	1.5	81.3	1.9	5.0	1.7	5.2	1.6	0.9	0.9	82.8	1.9	15.3	0.064	0.518	20.578513	-100.378541
T. Der. Libramiento de Querétaro (Blv. Bernardo Quintana)	207.00	3	2	40092	2.2	91.0	0.6	4.1	0.3	0.7	0.6	0.3	0.2	93.2	0.6	6.2	0.075	0.505	20.578375	-100.378506
Querétaro	211.60																			

11 CARR: Chalco - Mixquic

CLAVE: 00171

RUTA: EM-CDMX

AÑO: 2025

LUGAR	ESTACION				CLASIFICACION VEHICULAR EN PORCIENTO													COORDENADAS		
	KM	TE	SC	TDPA	M	A	B	C2	C3	T3S2	T3S3	T3S2R4	OTROS	A	B	C	K'	D	LATITUD	LONGITUD
Chalco	0.00	3	1	16338	5.4	89.9	0.4	2.5	0.9	0.4	0.2	0.2	0.1	95.3	0.4	4.3	0.069	0.523	19.240458	-98.909086
Chalco	0.00	3	2	17933	5.8	89.2	0.4	2.6	0.9	0.4	0.2	0.3	0.2	95.0	0.4	4.6	0.070	0.523	19.240218	-98.909151
Lim. Edos. Term. Méx. Ppia. CDMX	8.00																			
Mixquic	10.00	1	0	7625	8.0	86.7	0.6	2.8	0.7	0.6	0.3	0.2	0.1	94.7	0.6	4.7	0.066	0.522	19.224835	-98.945981

12 CARR: Chalco - Tláhuac

CLAVE: 00170

RUTA: EM-CDMX

AÑO: 2025

LUGAR	ESTACION				CLASIFICACION VEHICULAR EN PORCIENTO													COORDENADAS		
	KM	TE	SC	TDPA	M	A	B	C2	C3	T3S2	T3S3	T3S2R4	OTROS	A	B	C	K'	D	LATITUD	LONGITUD
Chalco	0.00	3	1	9627	3.2	88.5	1.2	4.7	0.6	1.1	0.2	0.2	0.3	91.7	1.2	7.1	0.080	0.505	19.248091	-98.926530
Chalco	0.00	3	2	9437	3.5	87.6	1.4	5.0	0.6	1.2	0.2	0.2	0.3	91.1	1.4	7.5	0.068	0.505	19.248006	-98.926627
Lim. Edos. Term. Méx. Ppia. CDMX	7.50																			
Tláhuac	12.00	1	1	11276	9.4	78.2	1.2	7.6	1.1	1.1	0.7	0.3	0.4	87.6	1.2	11.2	0.086	0.503	19.264413	-98.993079
Tláhuac	12.00	1	2	11392	9.1	77.7	1.4	8.0	1.2	1.2	0.7	0.3	0.4	86.8	1.4	11.8	0.087	0.503	19.264360	-98.993099

CIUDAD DE MÉXICO

13 CARR: T. C. (México - Mixquic) - San Pablo Atlazalpan

CLAVE: 00044

RUTA: EM-106-CDMX

AÑO: 2025

LUGAR	ESTACION				CLASIFICACION VEHICULAR EN PORCIENTO														COORDENADAS	
	KM	TE	SC	TDPA	M	A	B	C2	C3	T3S2	T3S3	T3S2R4	OTROS	A	B	C	K'	D	LATITUD	LONGITUD
T. C. México - Mixquic	0.00	3	0	8694	11.5	79.9	0.9	4.8	1.2	0.9	0.4	0.1	0.3	91.4	0.9	7.7	0.070	0.532	19.210776	-98.968923
Lim. Edos. Term. CDMX Ppia. Méx.	2.00																			
San Pablo Atlazalpan	7.00																			

14 CARR: Xalatlaco - El Ajusco

CLAVE: 00017

RUTA: EM-CDMX

AÑO: 2025

LUGAR	ESTACION				CLASIFICACION VEHICULAR EN PORCIENTO														COORDENADAS	
	KM	TE	SC	TDPA	M	A	B	C2	C3	T3S2	T3S3	T3S2R4	OTROS	A	B	C	K'	D	LATITUD	LONGITUD
T. C. Ent. Cruz de La Misión - San Nicolás Coatepec	0.00	3	0	1942	6.7	83.6	0.5	6.1	1.5	0.7	0.6	0.2	0.1	90.3	0.5	9.2	0.069	0.510	19.162954	-99.406236
Lim. Edos. Term. Méx. Ppia. CDMX	17.70																			
T. C. Circuito del Ajusco	27.60	1	0	890	7.3	81.7	0.7	7.6	1.6	0.7	0.2	0.2	0.0	89.0	0.7	10.3	0.101	0.535	19.201230	-99.280481

15 CARR: La Venta - Chamapa (Cuota)

CLAVE: 15014

RUTA: EM-D

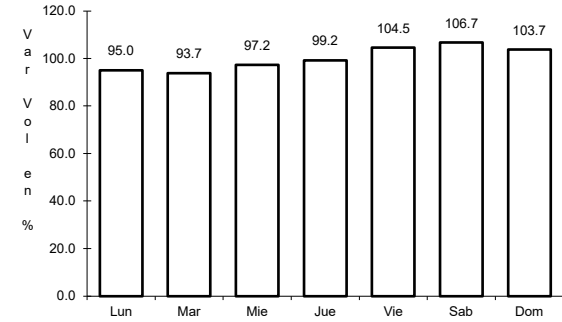
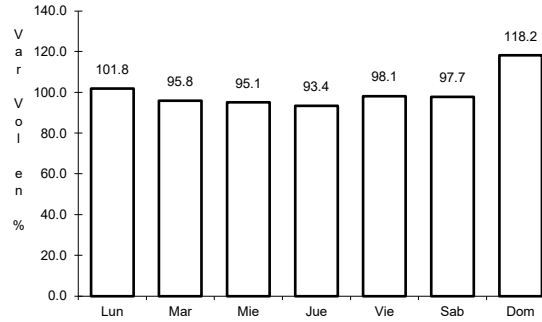
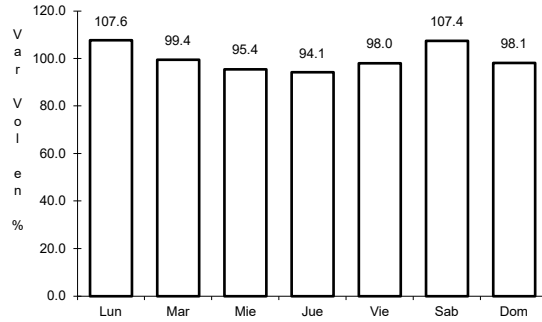
AÑO: 2025

LUGAR	ESTACION				CLASIFICACION VEHICULAR EN PORCIENTO														COORDENADAS	
	KM	TE	SC	TDPA	M	A	B	C2	C3	T3S2	T3S3	T3S2R4	OTROS	A	B	C	K'	D	LATITUD	LONGITUD
T. C. México - Toluca	0.00																			
Plaza de Cobro La Venta	0.10	2	1	9843	1.2	84.0	0.6	4.7	2.4	5.3	0.3	1.1	0.4	85.2	0.6	14.2	0.090	0.500	19.348946	-99.306623
Plaza de Cobro La Venta	0.10	2	2	9843	1.2	84.0	0.6	4.7	2.4	5.3	0.3	1.1	0.4	85.2	0.6	14.2	0.090	0.500	19.348946	-99.306623
Plaza de Cobro La Venta	0.10	3	1	10850	5.7	76.0	1.7	8.0	2.1	3.4	1.2	1.5	0.4	81.7	1.7	16.6	0.113	0.503	19.356361	-99.304091
Plaza de Cobro La Venta	0.10	3	2	10701	5.6	76.3	1.5	7.9	1.9	3.8	1.2	1.4	0.4	81.9	1.5	16.6	0.116	0.503	19.355124	-99.304704
Lim. Edos. Term. CDMX Tab. Ppia. Méx.	2.70																			
T. Der. Interlomas	5.60	3	1	16414	2.5	85.6	1.5	3.2	2.3	3.5	0.4	0.8	0.2	88.1	1.5	10.4	0.124	0.514	19.399406	-99.296789
T. Der. Interlomas	5.60	3	2	17385	2.6	85.3	1.7	3.3	1.9	3.7	0.5	0.8	0.2	87.9	1.7	10.4	0.155	0.514	19.399422	-99.296916
X. C. Naucalpan - Toluca	11.10	1	1	20029	4.2	84.1	1.2	5.3	1.0	2.9	0.5	0.7	0.1	88.3	1.2	10.5	0.120	0.508	19.423436	-99.296902
X. C. Naucalpan - Toluca	11.10	1	2	19431	4.0	85.4	1.1	4.8	0.9	2.5	0.5	0.7	0.1	89.4	1.1	9.5	0.168	0.508	19.429012	-99.295658

1 CARR: México - Cuernavaca (Libre)

CLAVE: 00040

ruta: MEX-095



Km: 28.78

Tipo: 1

Sent: 1

Km: 28.78

Tipo: 1

Sent: 2

Km: 51.40

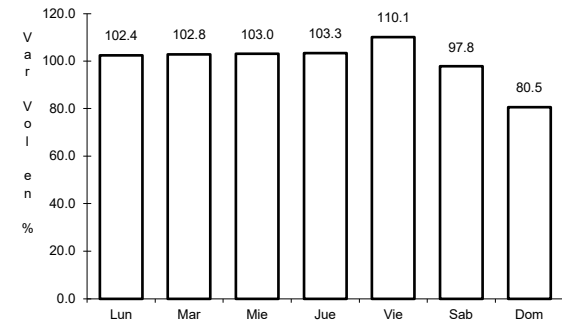
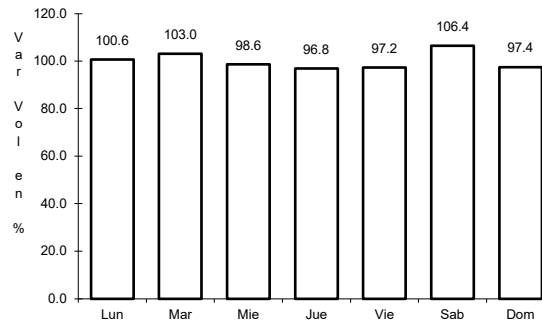
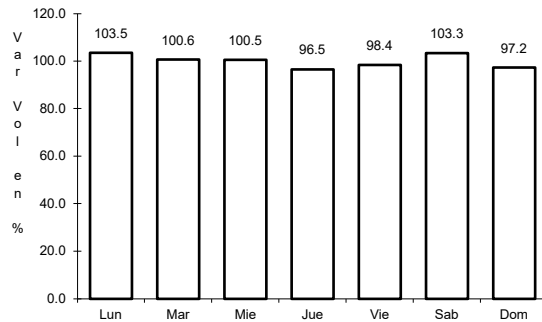
Tipo: 3

Sent: 0

2 CARR: México - Pachuca (Libre)

CLAVE: 00431

ruta: MEX-085



Km: 26.93

Tipo: 1

Sent: 1

Km: 26.93

Tipo: 1

Sent: 2

Km: 86.50

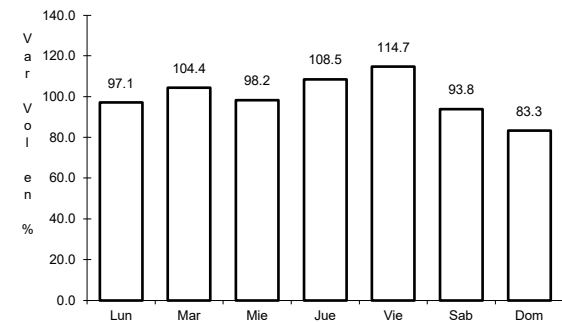
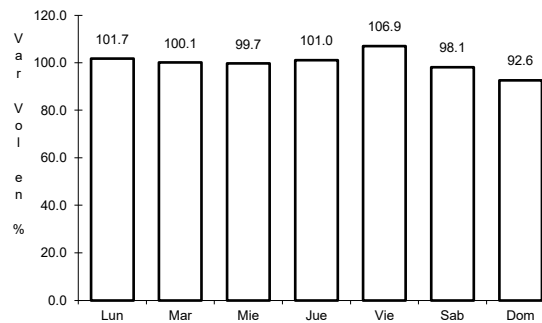
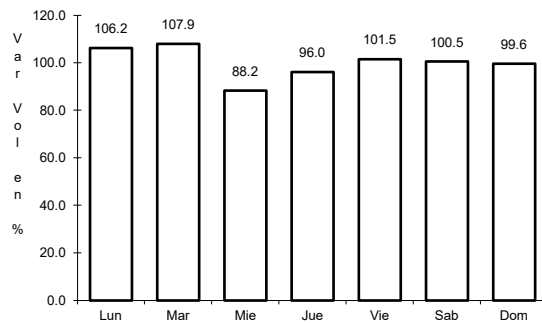
Tipo: 1

Sent: 1

3 CARR: México - Puebla (Libre)

CLAVE: 00449

ruta: MEX-150



Km: 28.85

Tipo: 1

Sent: 1

Km: 28.85

Tipo: 1

Sent: 2

Km: 62.06

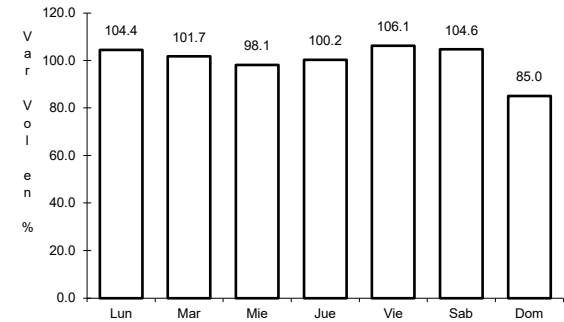
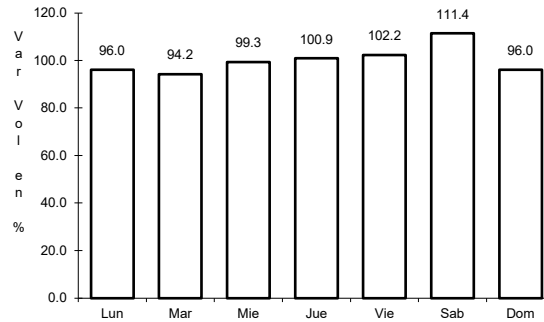
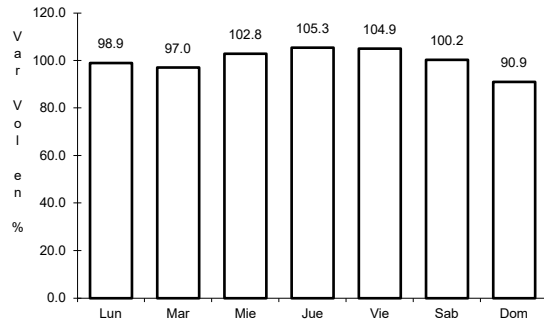
Tipo: 1

Sent: 0

4 CARR: México - Toluca

CLAVE: 00447

ruta: MEX-015



Km: 12.84 Tipo: 3 Sent: 1

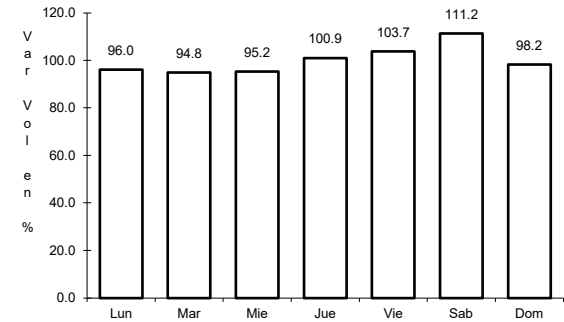
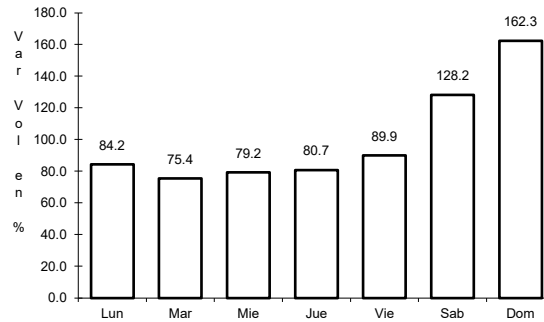
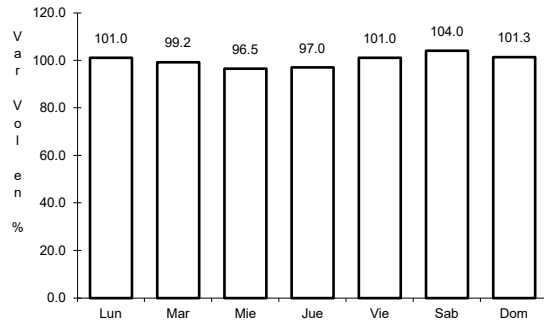
Km: 12.84 Tipo: 3 Sent: 2

Km: 51.71 Tipo: 1 Sent: 1

5 CARR: San Gregorio - Oaxtepec

CLAVE: 00901

ruta: MEX-113



Km: 0.00 Tipo: 3 Sent: 0

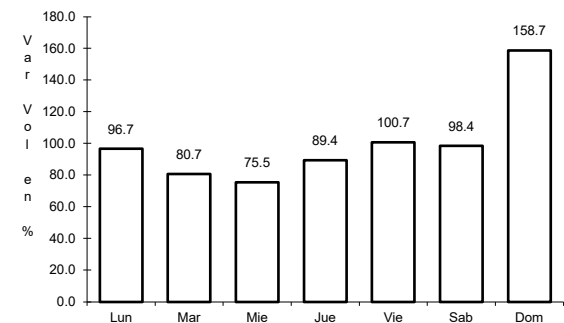
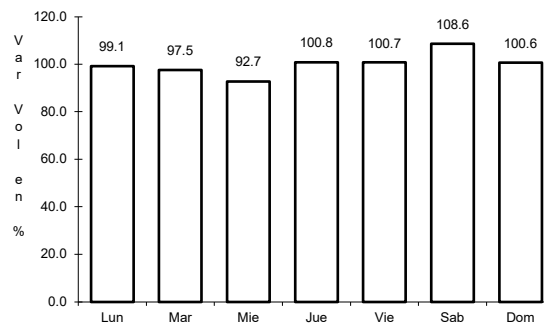
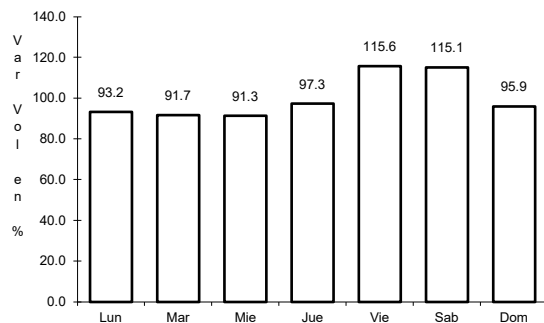
Km: 33.80 Tipo: 1 Sent: 0

Km: 53.00 Tipo: 3 Sent: 1

6 CARR: México - Cuernavaca (Cuota)

CLAVE: 00041

ruta: MEX-095D



Km: 18.65 Tipo: 3 Sent: 1

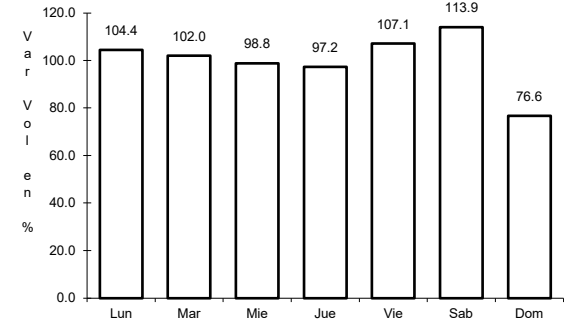
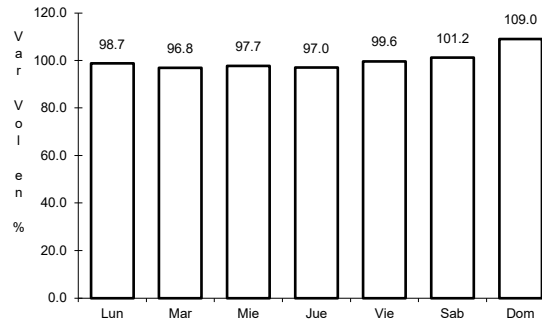
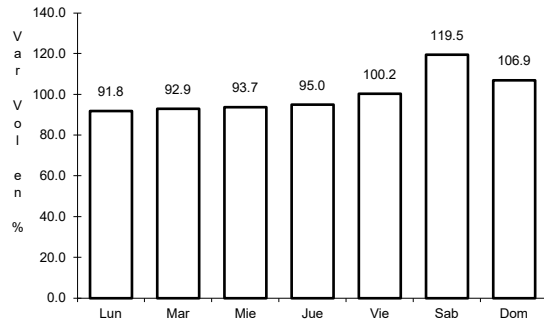
Km: 18.65 Tipo: 3 Sent: 2

Km: 70.50 Tipo: 1 Sent: 1

7 CARR: México - Pachuca (Cuota)

CLAVE: 00432

ruta: MEX-085D



Km: 25.00 Tipo: 3 Sent: 1

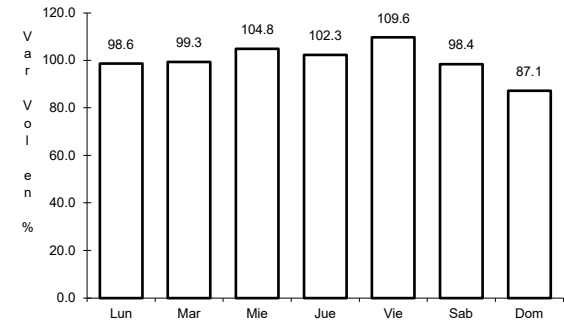
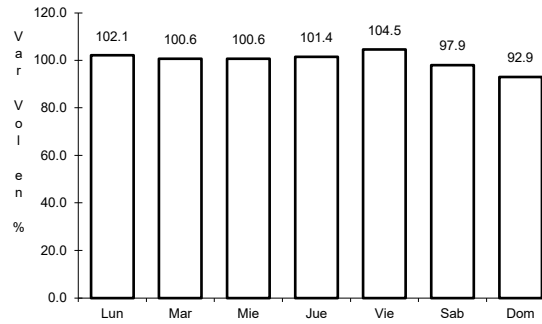
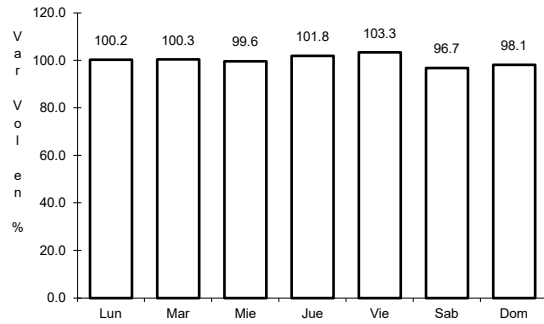
Km: 25.00 Tipo: 3 Sent: 2

Km: 60.50 Tipo: 1 Sent: 1

8 CARR: México - Puebla (Cuota)

CLAVE: 00450

ruta: MEX-150D



Km: 17.00 Tipo: 3 Sent: 1

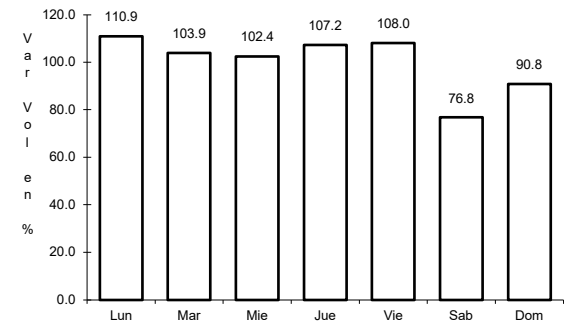
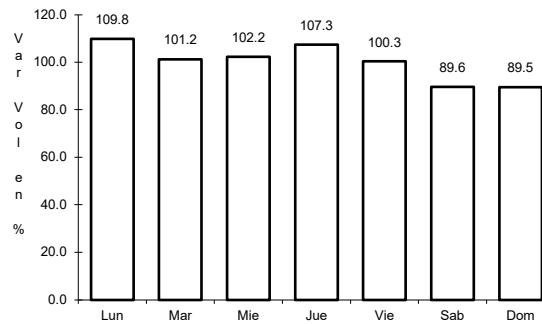
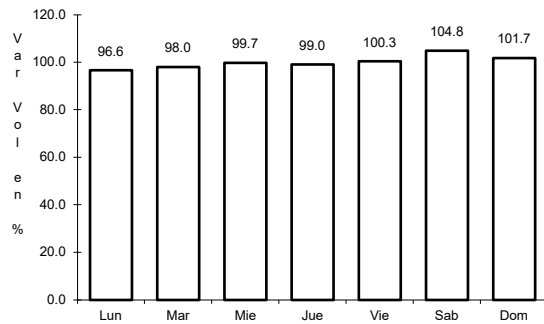
Km: 17.00 Tipo: 3 Sent: 2

Km: 120.46 Tipo: 3 Sent: 1

9 CARR: México - Toluca (Cuota)

CLAVE: 00446

ruta: MEX-015D



Km: 14.00 Tipo: 3 Sent: 1

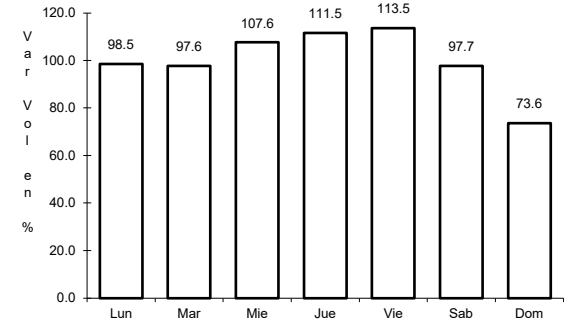
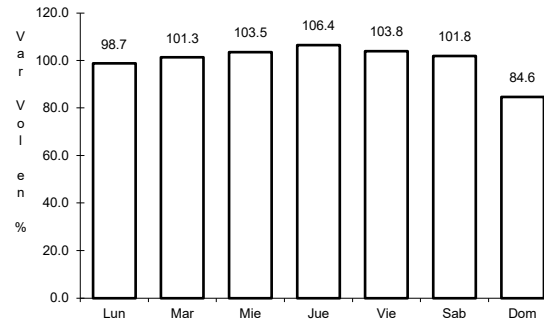
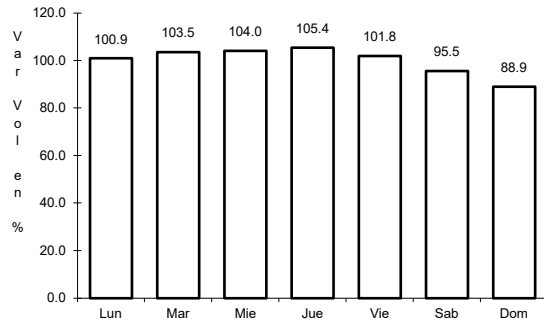
Km: 14.00 Tipo: 3 Sent: 2

Km: 32.65 Tipo: 1 Sent: 1

10 CARR: México - Querétaro (Cuota)

CLAVE: 00411

RUTA: MEX-057-MEX-057D



Km: 56.18 Tipo: 1 Sent: 1

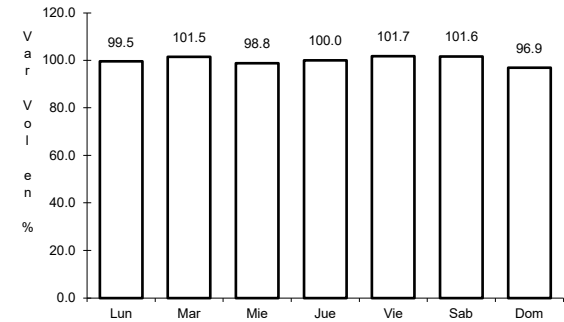
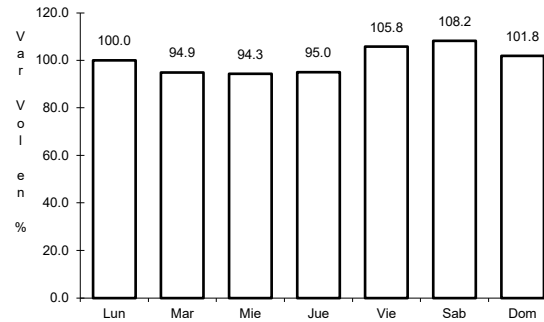
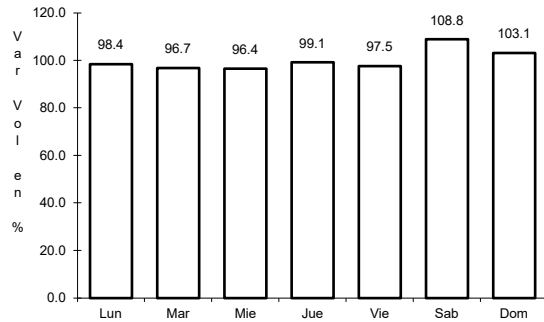
Km: 56.18 Tipo: 1 Sent: 2

Km: 207.00 Tipo: 3 Sent: 1

11 CARR: Chalco - Mixquic

CLAVE: 00171

RUTA: EM-CDMX



Km: 0.00 Tipo: 3 Sent: 1

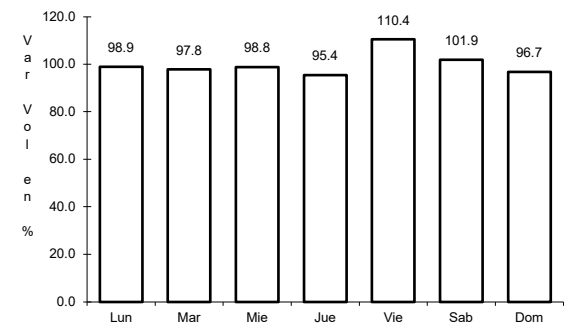
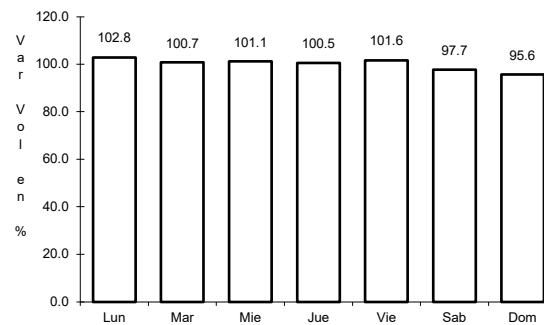
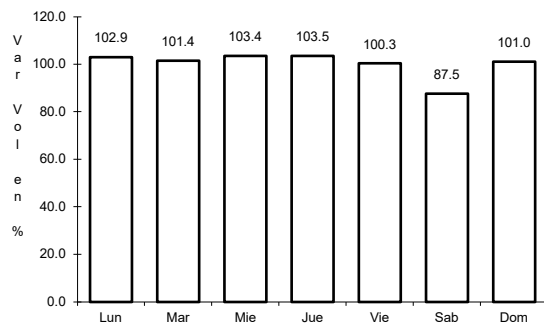
Km: 0.00 Tipo: 3 Sent: 2

Km: 10.00 Tipo: 1 Sent: 0

12 CARR: Chalco - Tláhuac

CLAVE: 00170

RUTA: EM-CDMX



Km: 0.00 Tipo: 3 Sent: 1

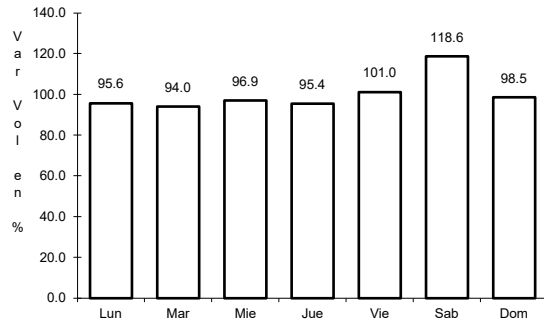
Km: 0.00 Tipo: 3 Sent: 2

Km: 12.00 Tipo: 1 Sent: 1

13 CARR: T. C. (México - Mixquic) - San Pablo Atlazalpan

CLAVE: 00044

ruta: EM-106-CDMX



Km: 0.00

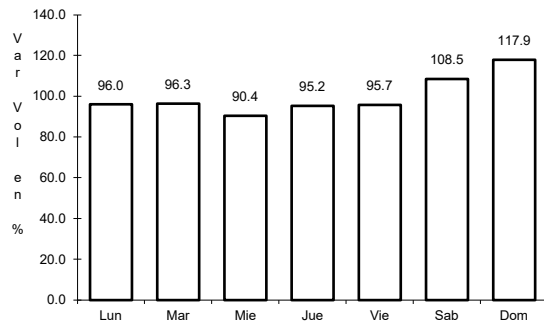
Tipo: 3

Sent: 0

14 CARR: Xalatlaco - El Ajusco

CLAVE: 00017

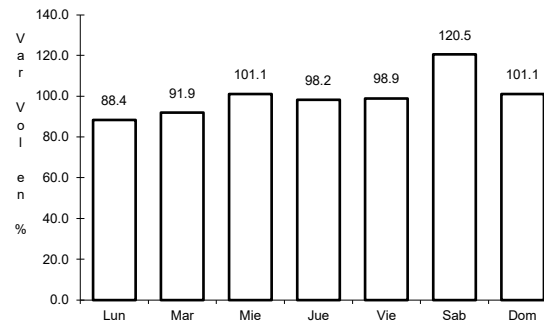
ruta: EM-CDMX



Km: 0.00

Tipo: 3

Sent: 0



Km: 27.60

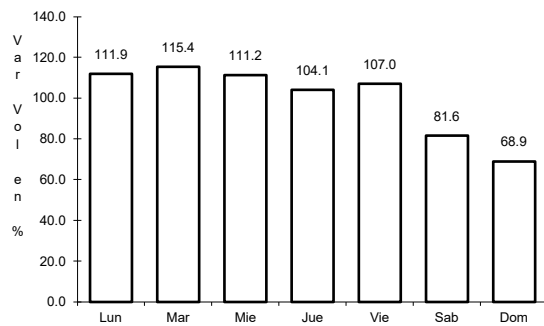
Tipo: 1

Sent: 0

15 CARR: La Venta - Chamapa (Cuota)

CLAVE: 15014

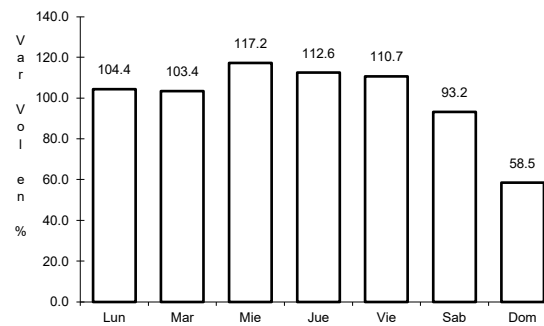
ruta: EM-D



Km: 0.10

Tipo: 3

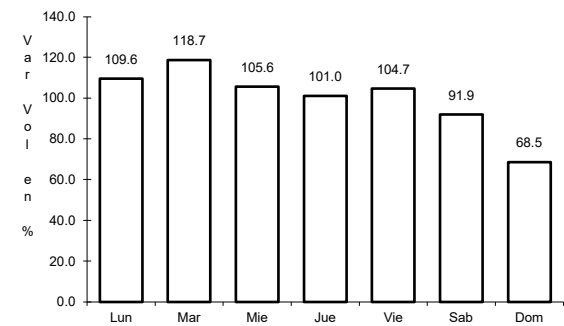
Sent: 1



Km: 0.10

Tipo: 3

Sent: 2



Km: 11.10

Tipo: 1

Sent: 1

